



EXTERIOR OVERVIEW

DIVISION 07-42 SOLID PHENOLIC EXTERIOR CLADDING



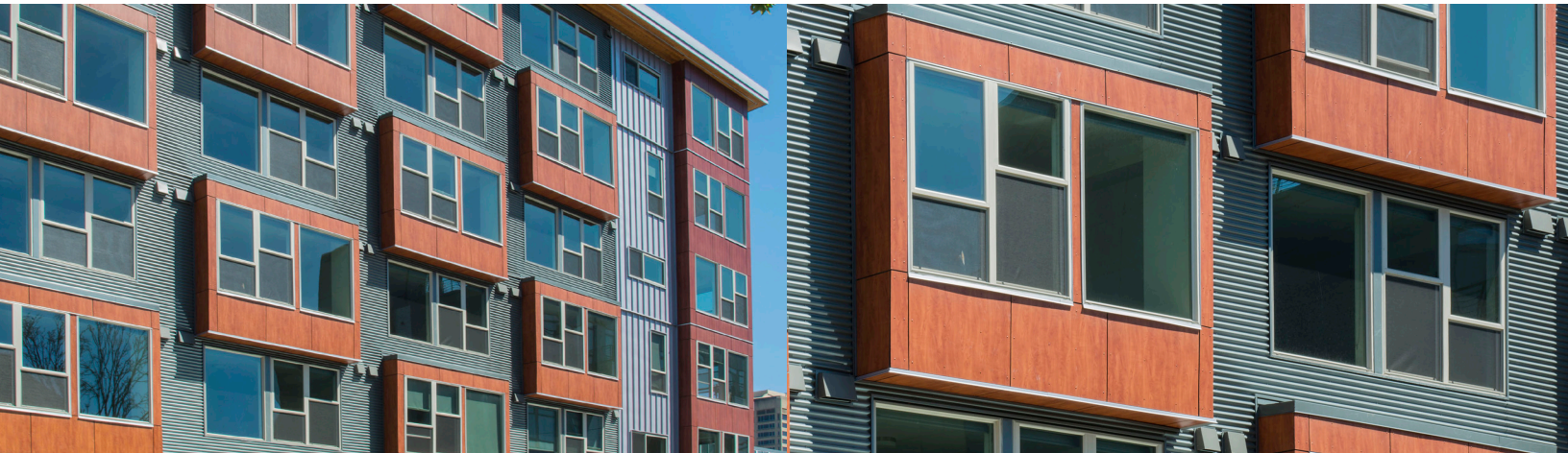
STILLAGUAMISH ADMINISTRATION BUILDING

About Stonewood Panels

- Solid phenolic panels for use as open joint exterior cladding
- Manufactured and customer service in Wisconsin, USA
- Low minimum order requirements
- Competitive pricing and reliable on-time delivery
- Standard ten year warranty

Cladding Built to Last

- Non-porous surface, easy to clean and graffiti resistant
- Passed stringent NFPA 285 Standard Fire test
- Simplified long-term maintenance, replace singular panels as required
- Available with Class A or B fire rating

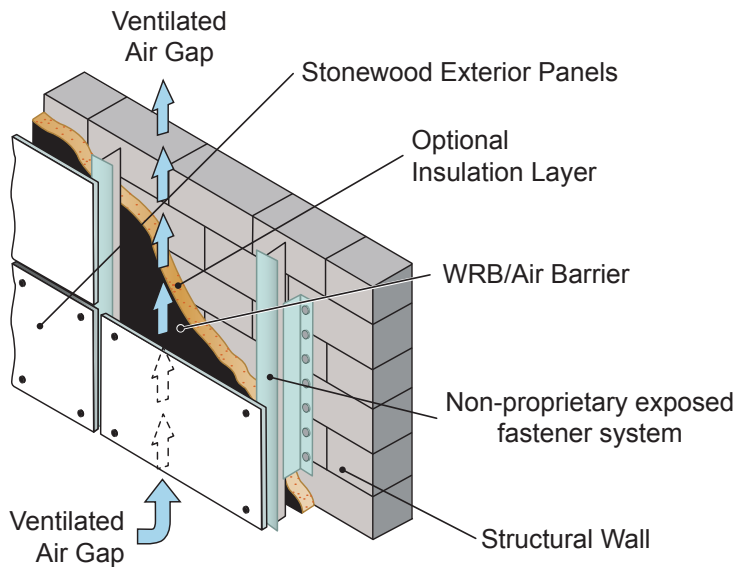


Straightforward Installation

- Attach using non-proprietary exposed fastener system
- Field or factory fabrication
- Self-edging or traditional edge treatments

Panels for Every Purpose

- Suited for all construction types: commercial, hospitality, mixed-use, municipal, multi-family, healthcare and institutional
- In-house CNC routers available to shape panels to specific specifications
- Extensive Design Offering



Stonewood used as rain screen cladding in ventilated facade system

Stonewood panels are an ideal choice for improving moisture management and energy efficiency using rain screen design.

Rain screen design provides a cavity between the exterior cladding and the main structure of the wall. The cavity allows for free drainage of any water which may penetrate the cladding and an air space to promote rapid drying. It also prevents thermal bridging which in turn improves energy efficiency and reduces condensation providing a healthier building.

Environmentally Responsible

- Proudly offered with Forest Stewardship Council® certification
- Production energy sourced from in-house scrap materials
- Contributes to LEED credits in multiple categories

FSC® Certified



The mark of
responsible forestry
FSC® C115183

In March 2013 Fibersin achieved FSC certification. Fibersin Stonewood Architectural Panels, both exterior and interior, are available with Forest Stewardship Council™ certification.

Stonewood Exterior Panel Testing

Description	Information	Class A	Class B
Flame Spread Index - ASTM E-84 (BLDG)	Tests were performed on a 0.25" panel.	0	60
Smoke Developed Values - ASTM E-84 (BLDG)	Class B is considered to be the Standard Product.	10	200
Assembly Fire Test/ Fire Propagation	NFPA 285	PASS	

Property	Direction	Class A	Class B
Flexural Strength ASTM D-790 (PSI)	Machine Direction	18,000	20,000
	Cross Direction	12,000	16,000
Flexural Modulus ASTM D-790 (PSI)	Machine Direction	1.5 x 10 ⁶	1.9 x 10 ⁶
	Cross Direction	1.1 x 10 ⁶	1.3 x 10 ⁶
Tensile Modulus ASTM D-638 (PSI)	Machine Direction	15,000	18,000
	Cross Direction	10,000	12,000

¹ Test Method: ASTM E84-13a and ASTM E84-12 Standard Test Method for Surface Burning Characteristics of Building Materials. Also known as NFPA 255, UL 723, and UBC 8-1.

Visit Stonewoodpanels.com for:



Comprehensive Testing Data



Installation Instructions



Details