

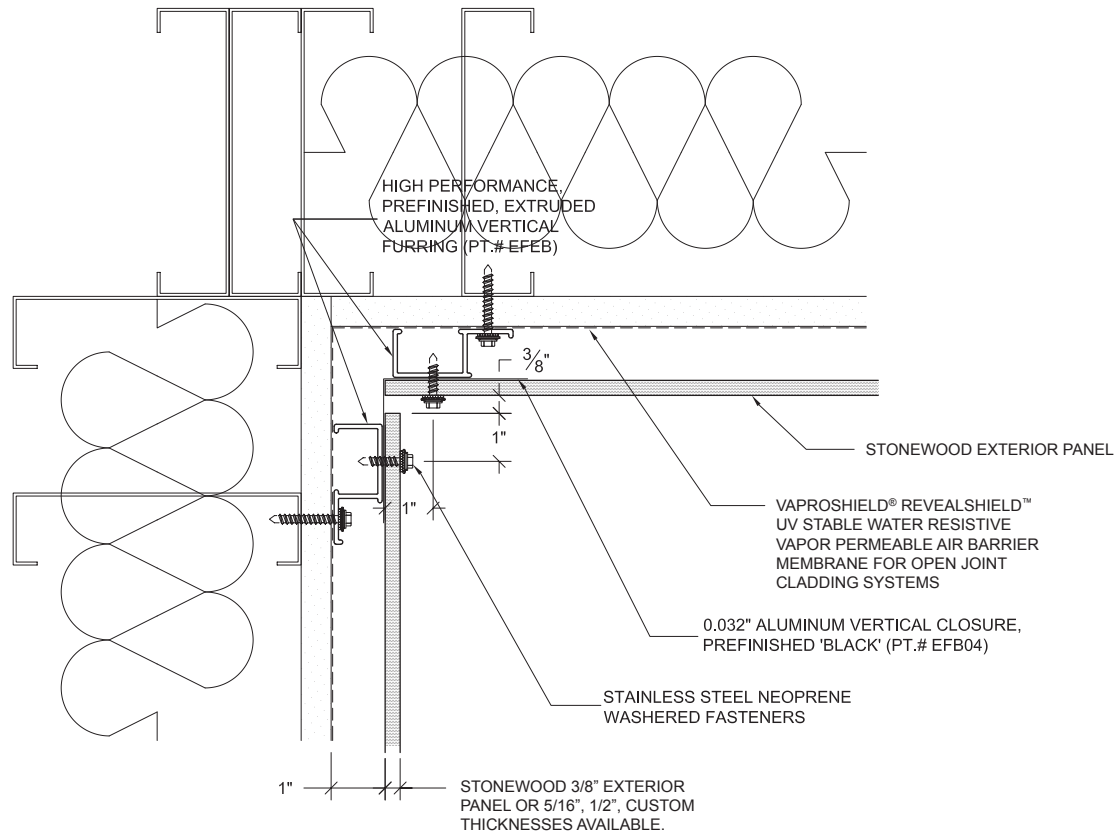
INSIDE CORNER (H)

SCALE: 3" = 1' - 0"



STONEWOOD
ARCHITECTURAL PANELS

Publish Date: 03.2013



- **Note:** Fasten furring into aligned stud or horizontal blocking. Spacing per engineering, 2'-0" O.C. Max

- For further information regarding Stonewood Architectural Panels call: 800-450-0051 or visit: www.Stonewoodpanels.com.

- For details without exterior insulation, or to download the CAD version of this detail, please see www.northclad.com.

Important Note:

Fibersin Industries and Northclad Rainscreen Solutions independently warrant the performance of their products. Please contact Fibersin Industries or NorthClad Rainscreen Solutions or visit Stonewoodpanels.com and Northclad.com for more warranty information.

NorthClad[®]
rainscreen solutions

The EF Series

3 NorthClad[®] EF Series Exposed Fastener
Panel System - Publish Date: 01.2012