

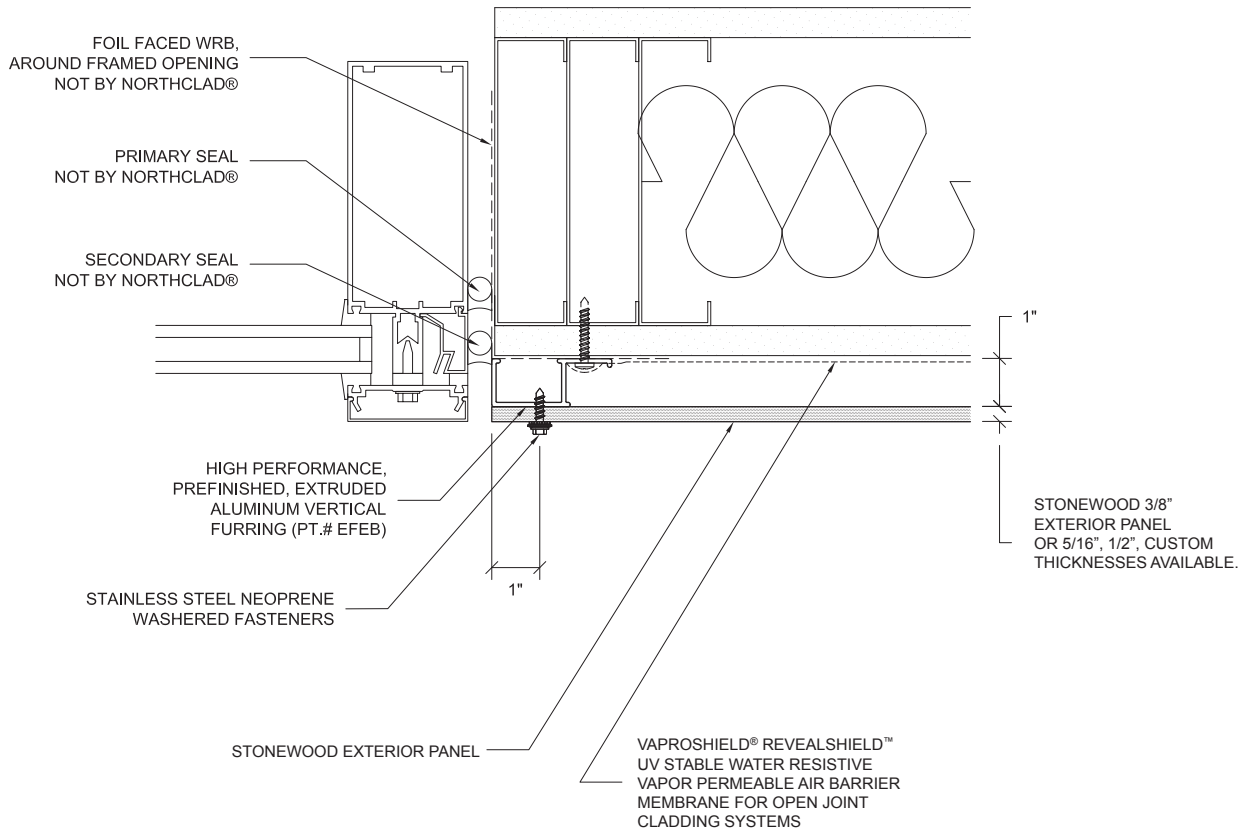
# WINDOW JAMB R

SCALE: 3" = 1' - 0"



**STONEWOOD**  
ARCHITECTURAL PANELS

Publish Date: 03.2013



- **Note:** Fasten furring into aligned stud or horizontal blocking. Spacing per engineering, 2'-0" O.C. Max

- For further information regarding Stonewood Architectural Panels call: 800-450-0051 or visit: [www.Stonewoodpanels.com](http://www.Stonewoodpanels.com).

- For details without exterior insulation, or to download the CAD version of this detail, please see [www.northclad.com](http://www.northclad.com).

**Important Note:**

Fibersin Industries and Northclad Rainscreen Solutions independently warrant the performance of their products. Please contact Fibersin Industries or NorthClad Rainscreen Solutions or visit [Stonewoodpanels.com](http://Stonewoodpanels.com) and [Northclad.com](http://Northclad.com) for more warranty information.



**The EF Series**

3 NorthClad® EF Series Exposed Fastener Panel System - Publish Date: 01.2012