

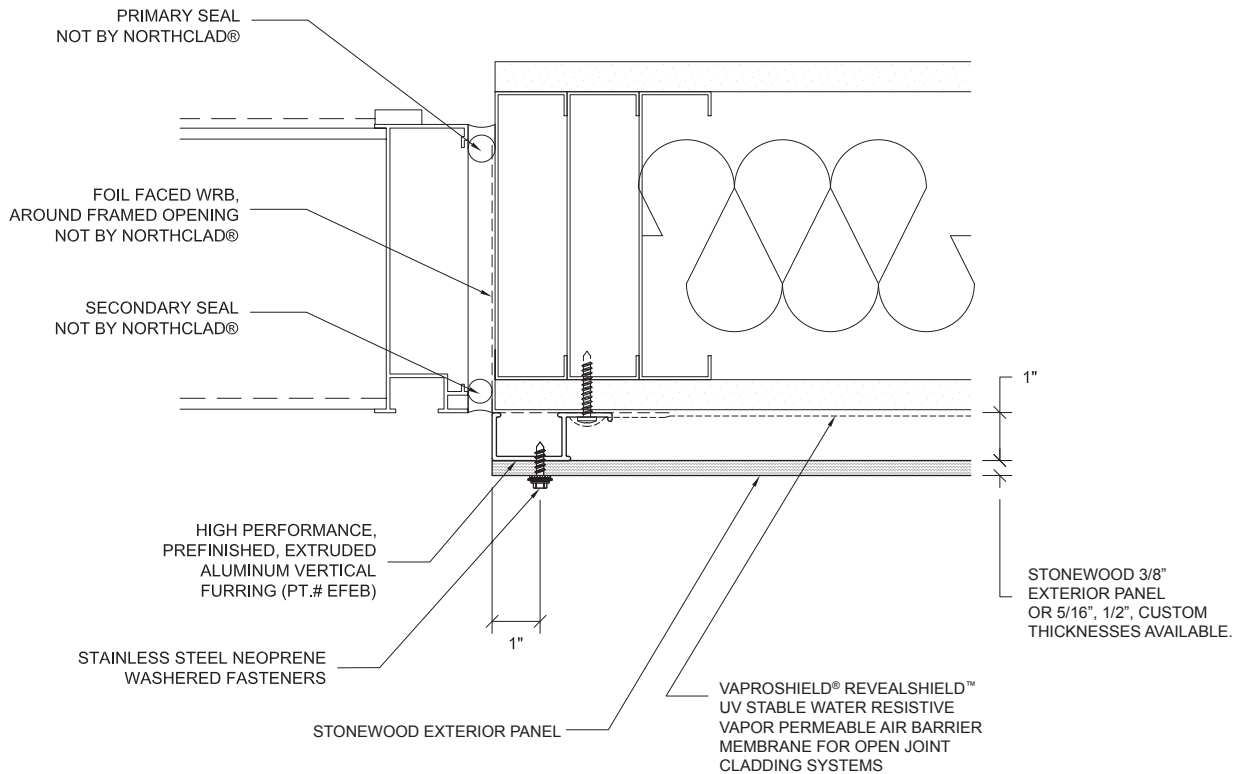
LOUVER JAMB (S)

SCALE: 3" = 1' - 0"



STONEWOOD
ARCHITECTURAL PANELS

Publish Date: 03.2013



- **Note:** Fasten furring into aligned stud or horizontal blocking. Spacing per engineering, 2'-0" O.C. Max

- For further information regarding Stonewood Architectural Panels call: 800-450-0051 or visit: www.Stonewoodpanels.com.

- For details without exterior insulation, or to download the CAD version of this detail, please see www.northclad.com.

Important Note:

Fibersin Industries and Northclad Rainscreen Solutions independently warrant the performance of their products. Please contact Fibersin Industries or NorthClad Rainscreen Solutions or visit Stonewoodpanels.com and Northclad.com for more warranty information.



The EF Series

3 NorthClad® EF Series Exposed Fastener Panel System - Publish Date: 01.2012