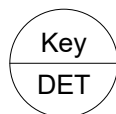
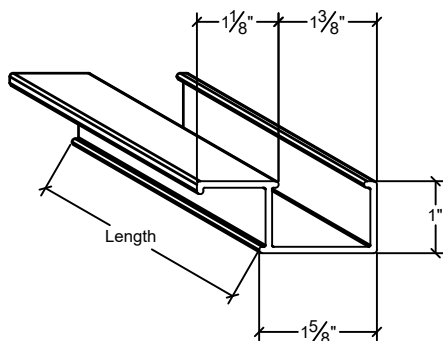


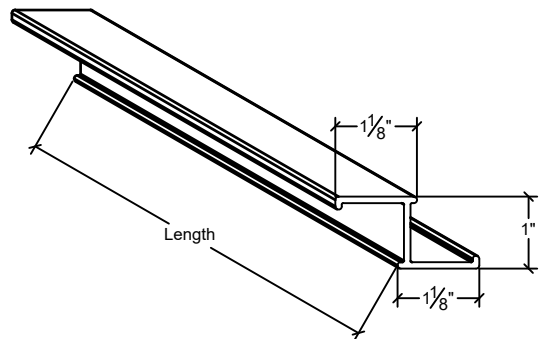
Extruded aluminum furring must be attached to structural members designed to support the dead and live loading of the entire wall system. the following details do not specify, suggest, or imply the attachment between the structure and aluminum furring. The customer is responsible for the structural engineering of attachment to structure.



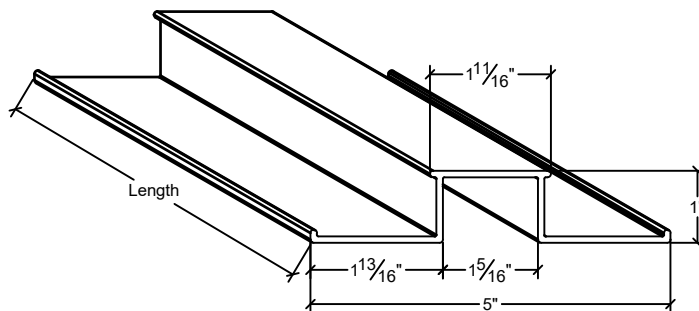
Elevation



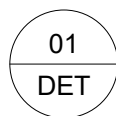
XEB - Vertical Termination Furring  
Structural Grade Aluminum Alloy Extrusion  
Factory Finished Black



XZB - Vertical Spanning Furring  
Structural Grade Aluminum Alloy Extrusion  
Factory Finished Black



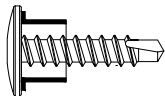
XHB - Vertical Joining Furring  
Structural Grade Aluminum Alloy Extrusion  
Factory Finished Black



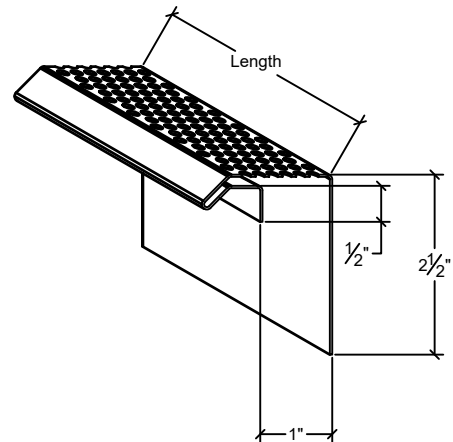
Exposed Fastening System Parts Catalog



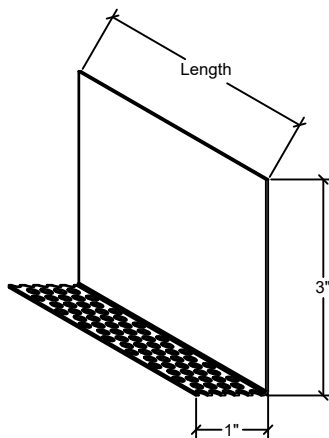
XBB:  
Grommet Washer



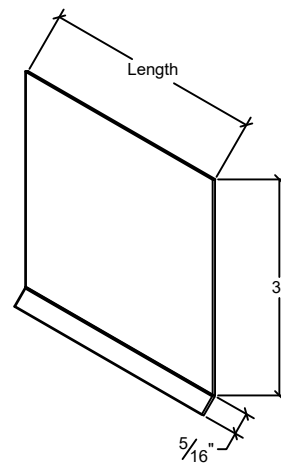
Visual of stainless  
steel fastener with  
XBB



XB01: Optional  
Horizontal Top Closure Flashing  
Used to Terminate System at Header Conditions  
Formed Sheet Metal, Factory Finished Black



XB02: Optional  
Horizontal Bottom Closure Flashing  
Used to Terminate System at Sill Conditions  
Formed Sheet Metal, Factory Finished Black



XB03: Optional  
Horizontal Joint Drip Flashing  
Used to Close Horizontal System Joints  
Formed Sheet Metal, Factory Finished Black

02

DET

Exposed Fastening System Parts Catalog

Sheathing &  
WRB Detailing  
Not by Fibresin

Stonewood Panel

Extruded Aluminum Vertical Furrings  
See 01/DET

Optional XB02  
See 02/DET

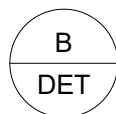
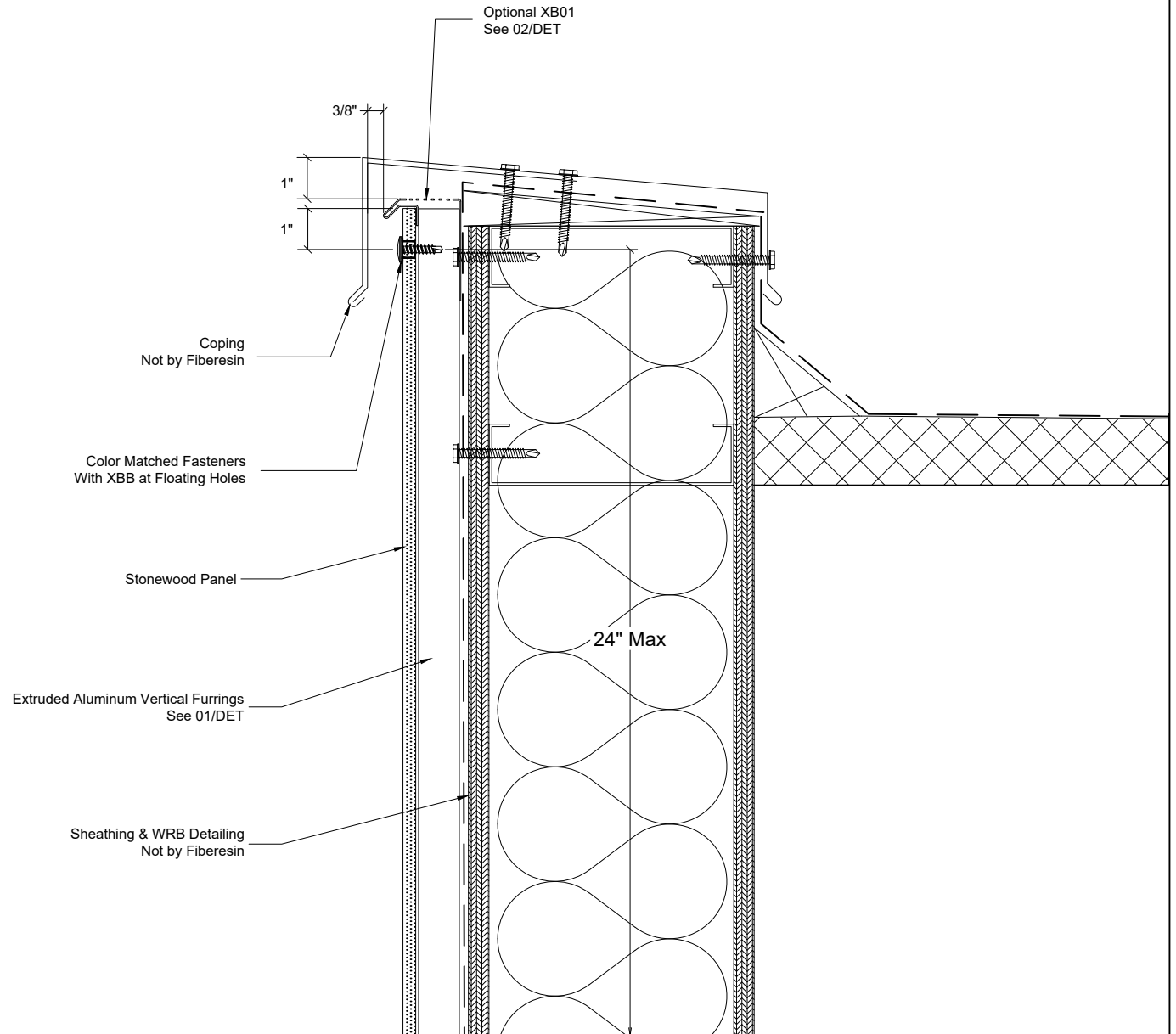
Color Matched Fasteners  
With XBB at Floating Holes  
See 02/DET

Min. Required 3/4" Ventilation  
Gap Above Finished Landscaping 1"

24" Max

A  
DET Section - Panel at Bottom Termination

STONEWOOD EXPOSED FASTENING  
DETAIL SET



Section - Panel at Top Termination

Sheathing & WRB Detailing  
Not by Fibresin

Gap in Furring at Framing  
Relief Joints as Required

Optional XB03  
See 02/DET

1"

3/8"

1"

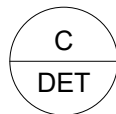
Color Matched Fasteners  
With XBB at Floating Holes

Stonewood Panel

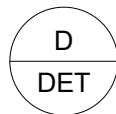
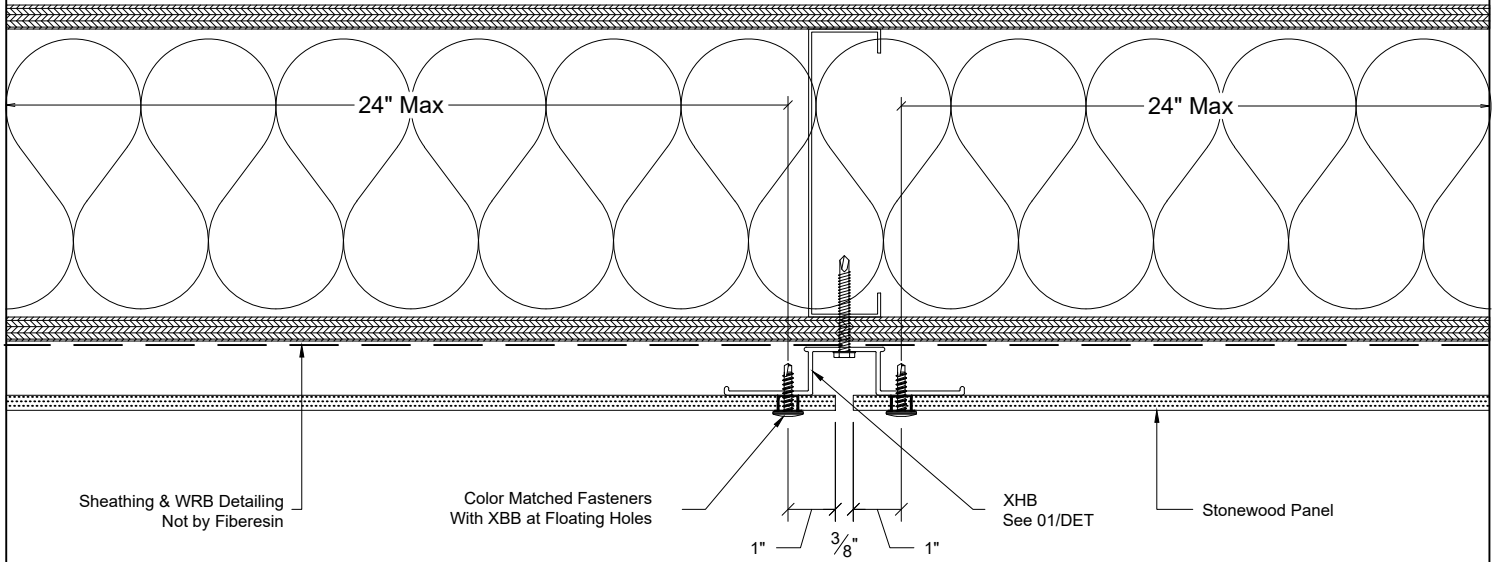
Extruded Aluminum Vertical Furrings  
See 01/DET

24" Max

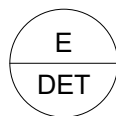
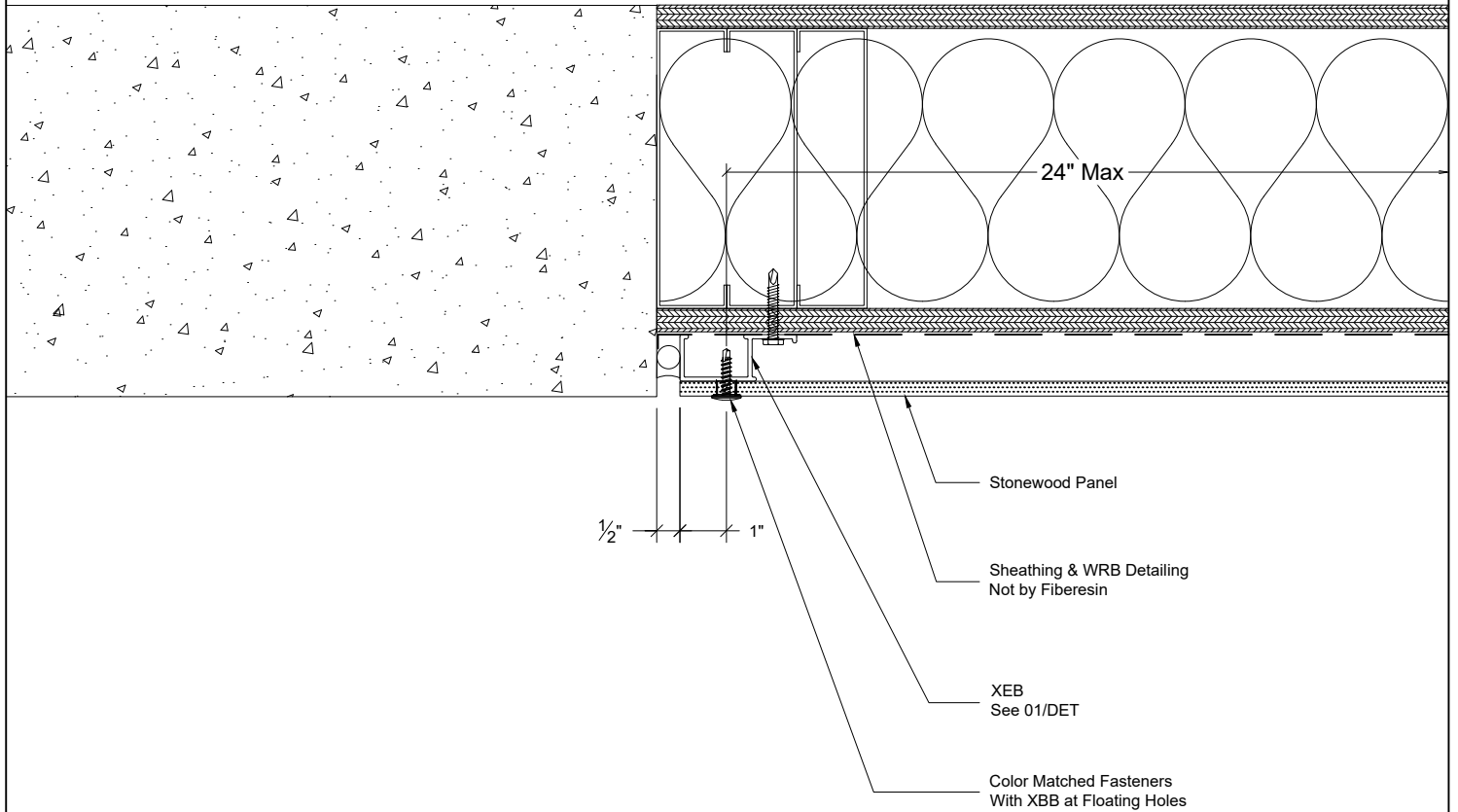
24" Max



Section - Panel at Horizontal Joint

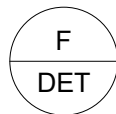
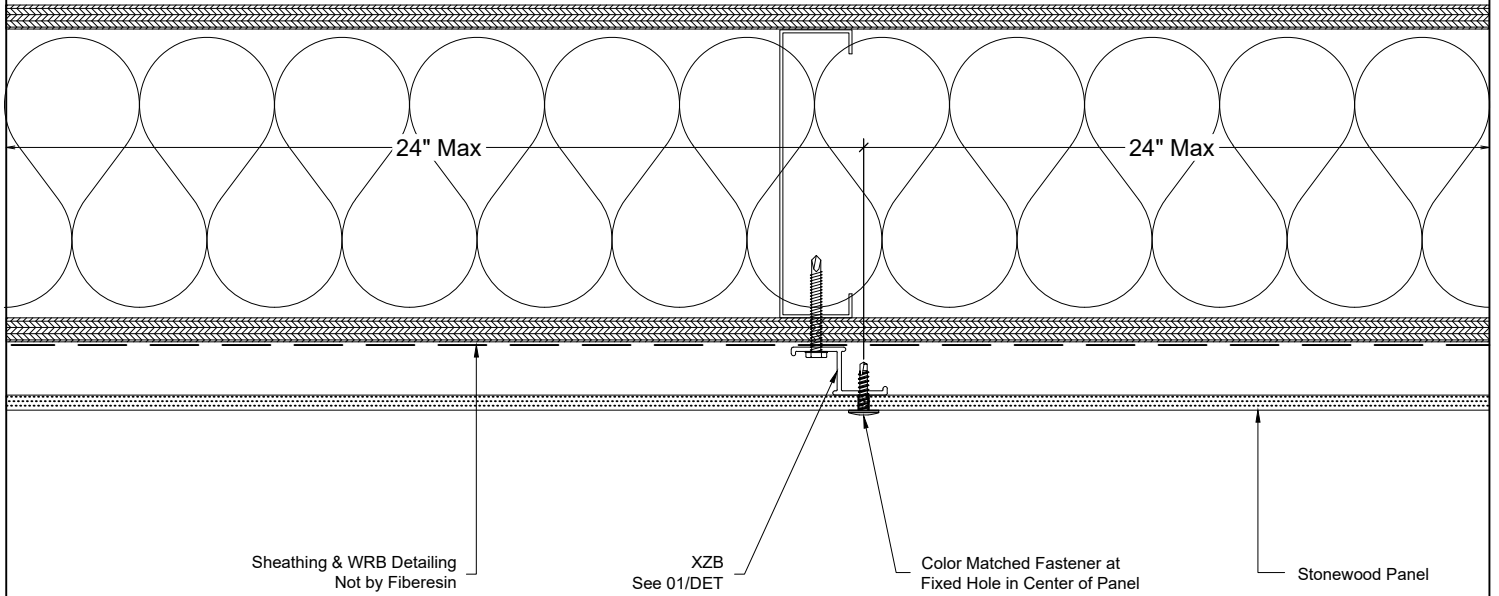


Plan - Panel at Vertical Joint

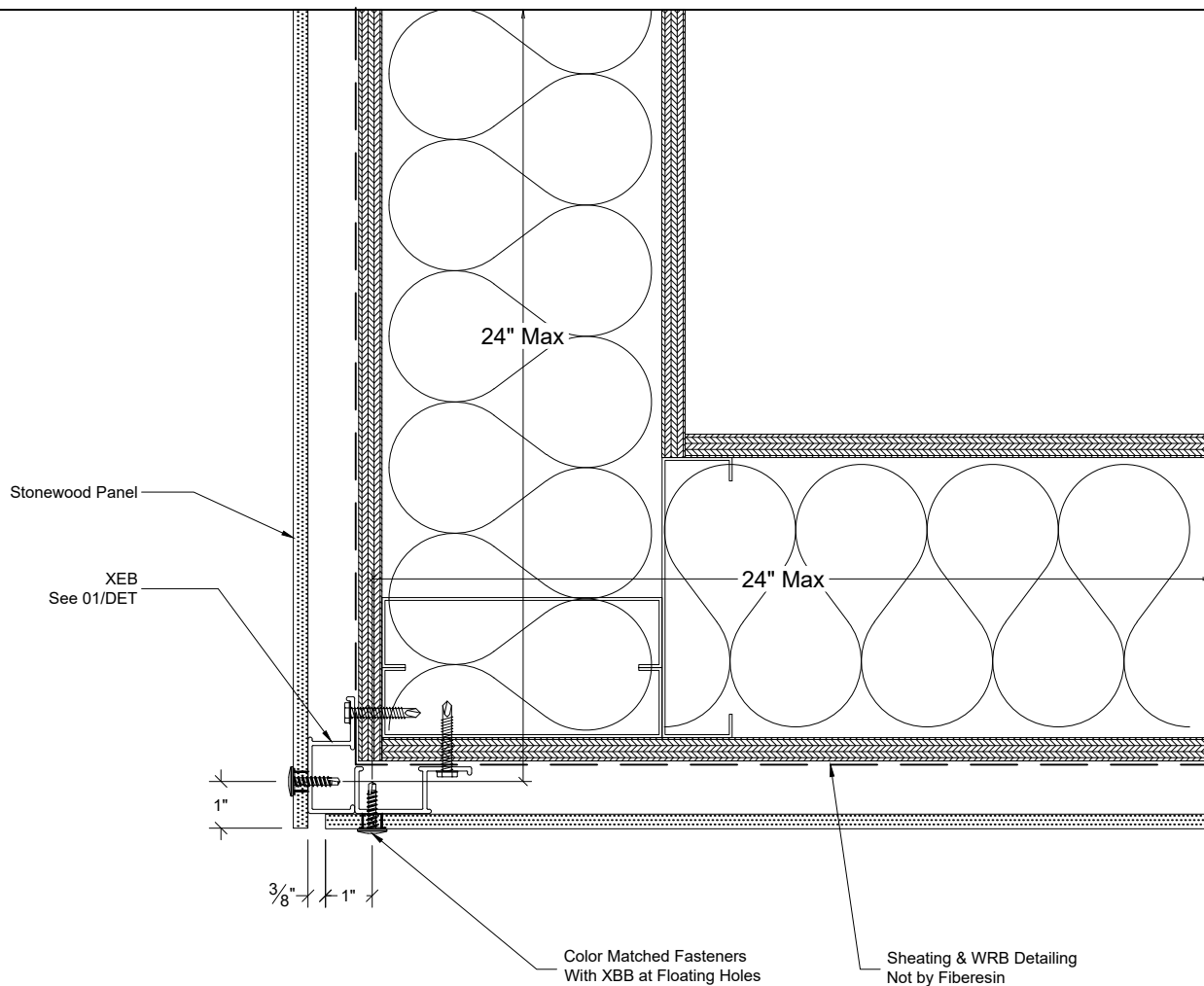


Plan - Panel at Forced Termination



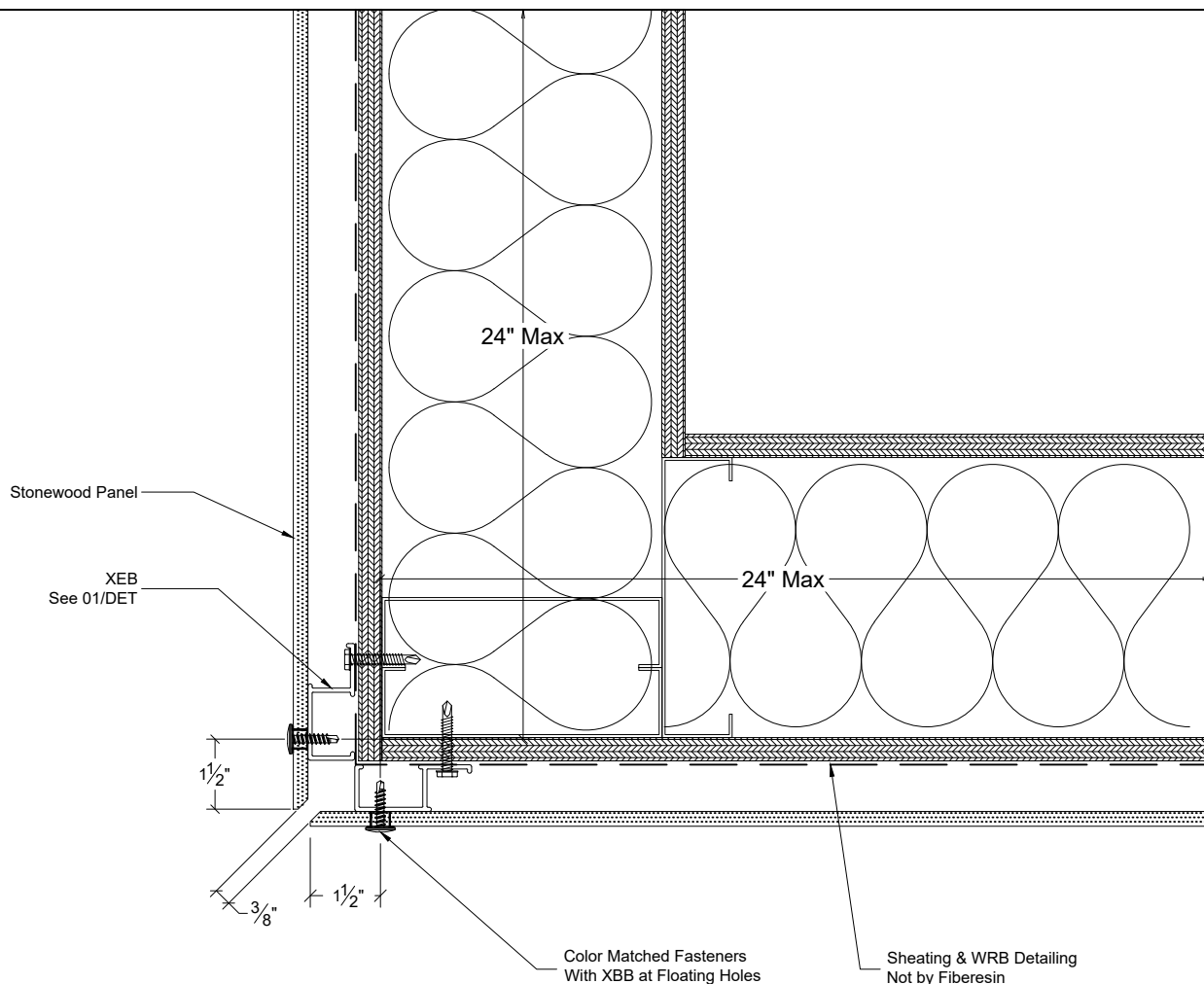


Plan - Fixed Point at Center of Panel



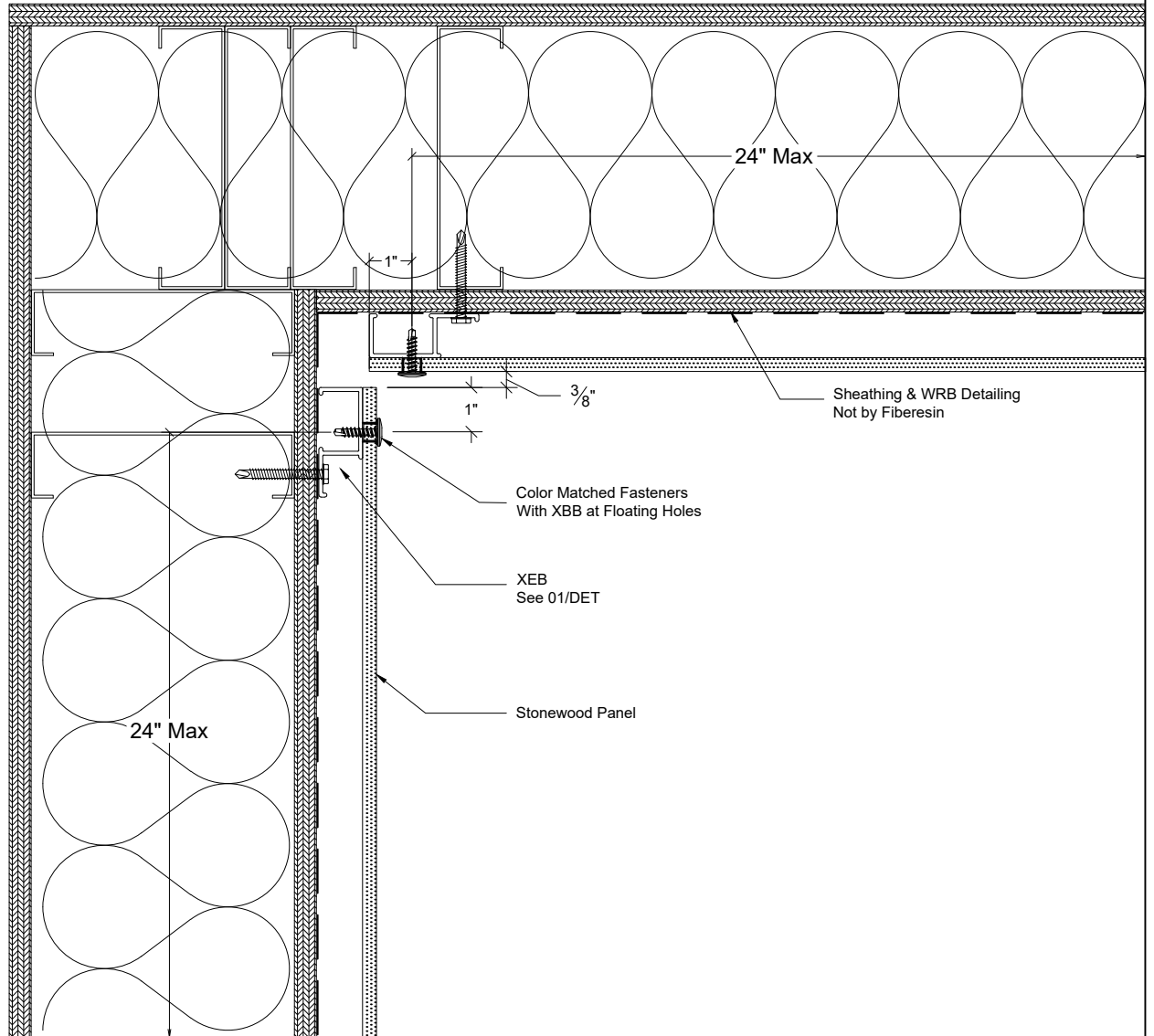
G1  
DET

Plan - Panel at Outside Corner: Primary



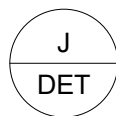
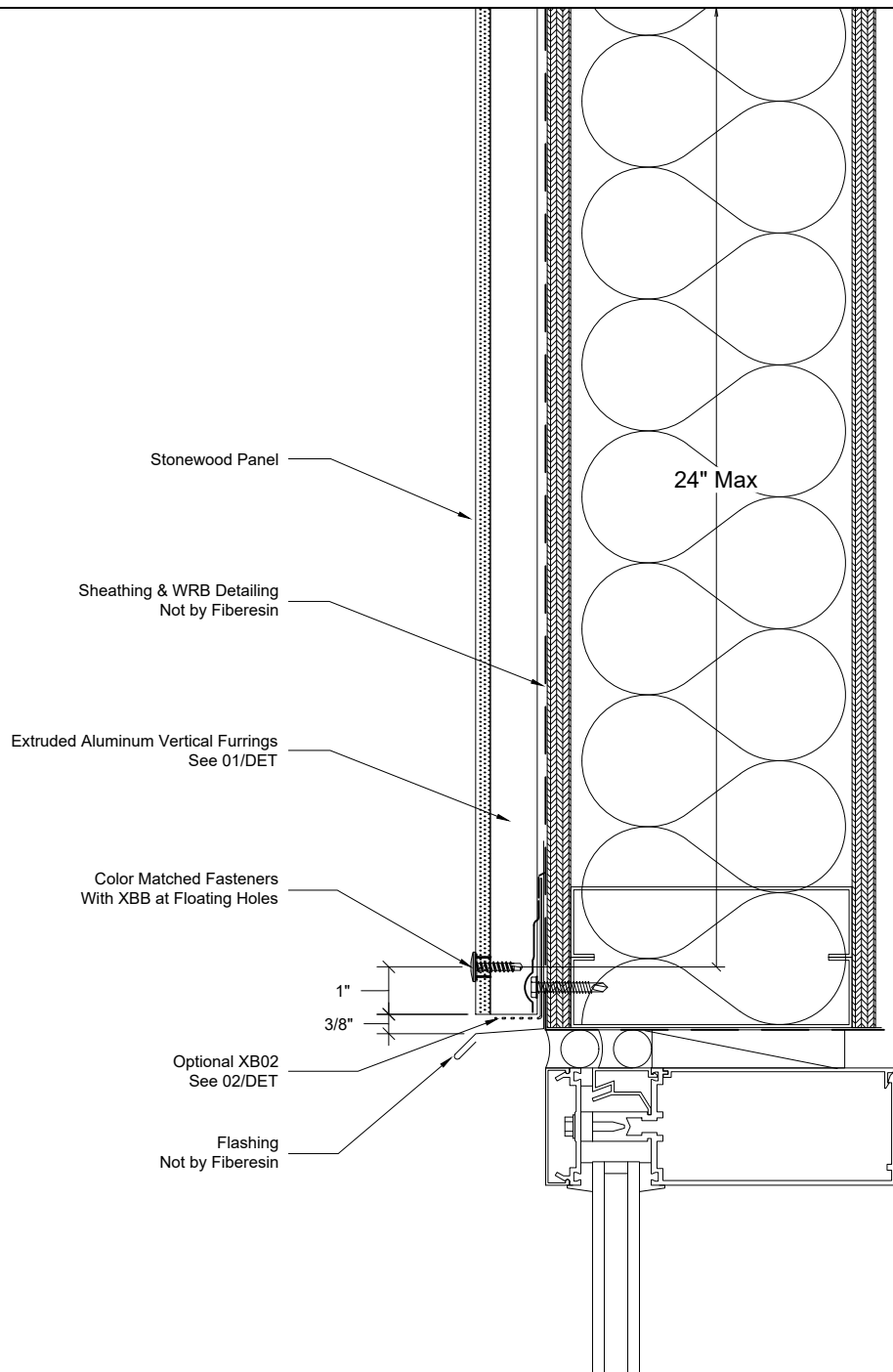
G2  
DET

Plan - Panel at Outside Corner: Alternative

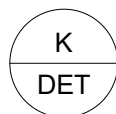
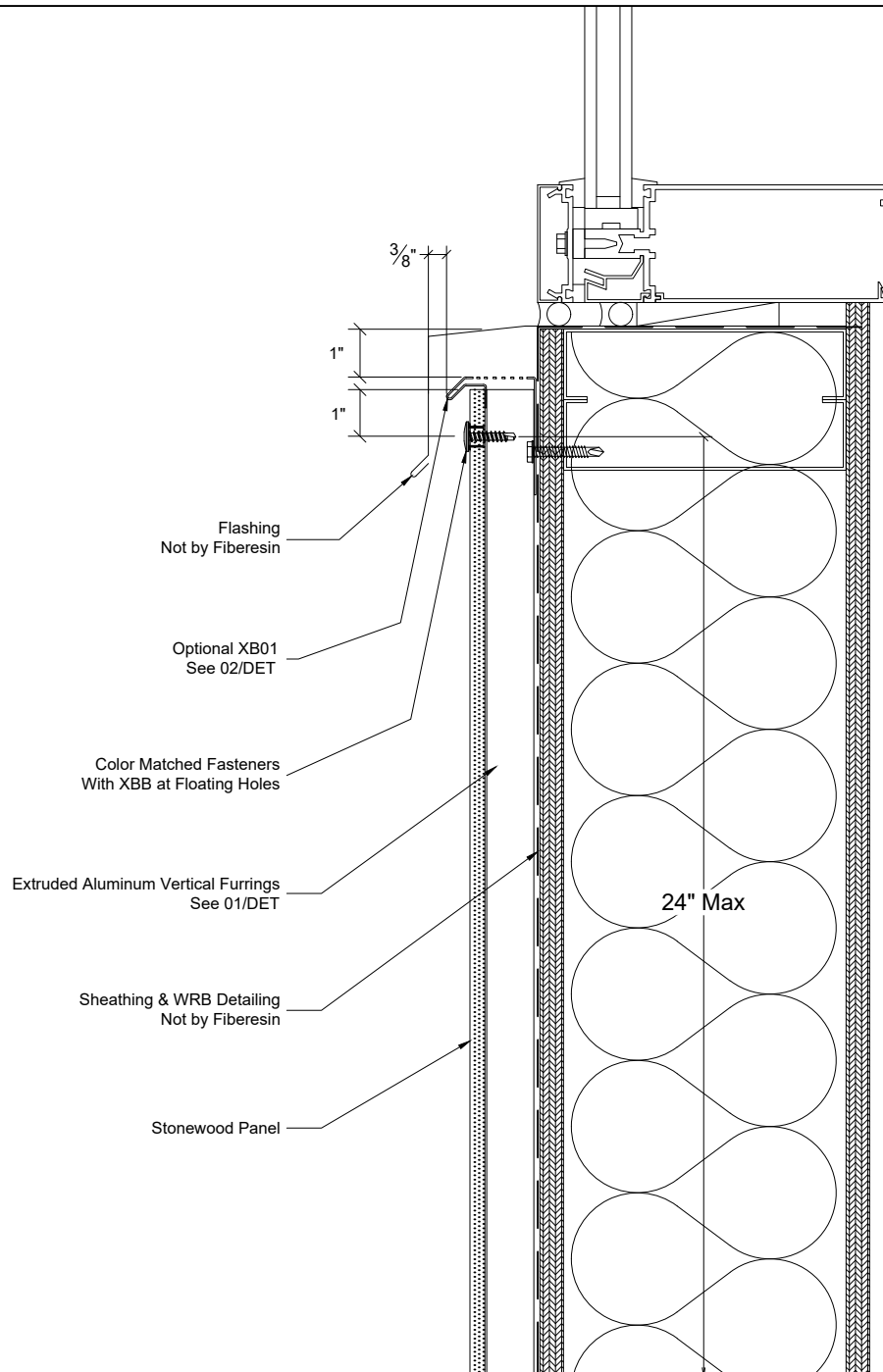


H  
DET

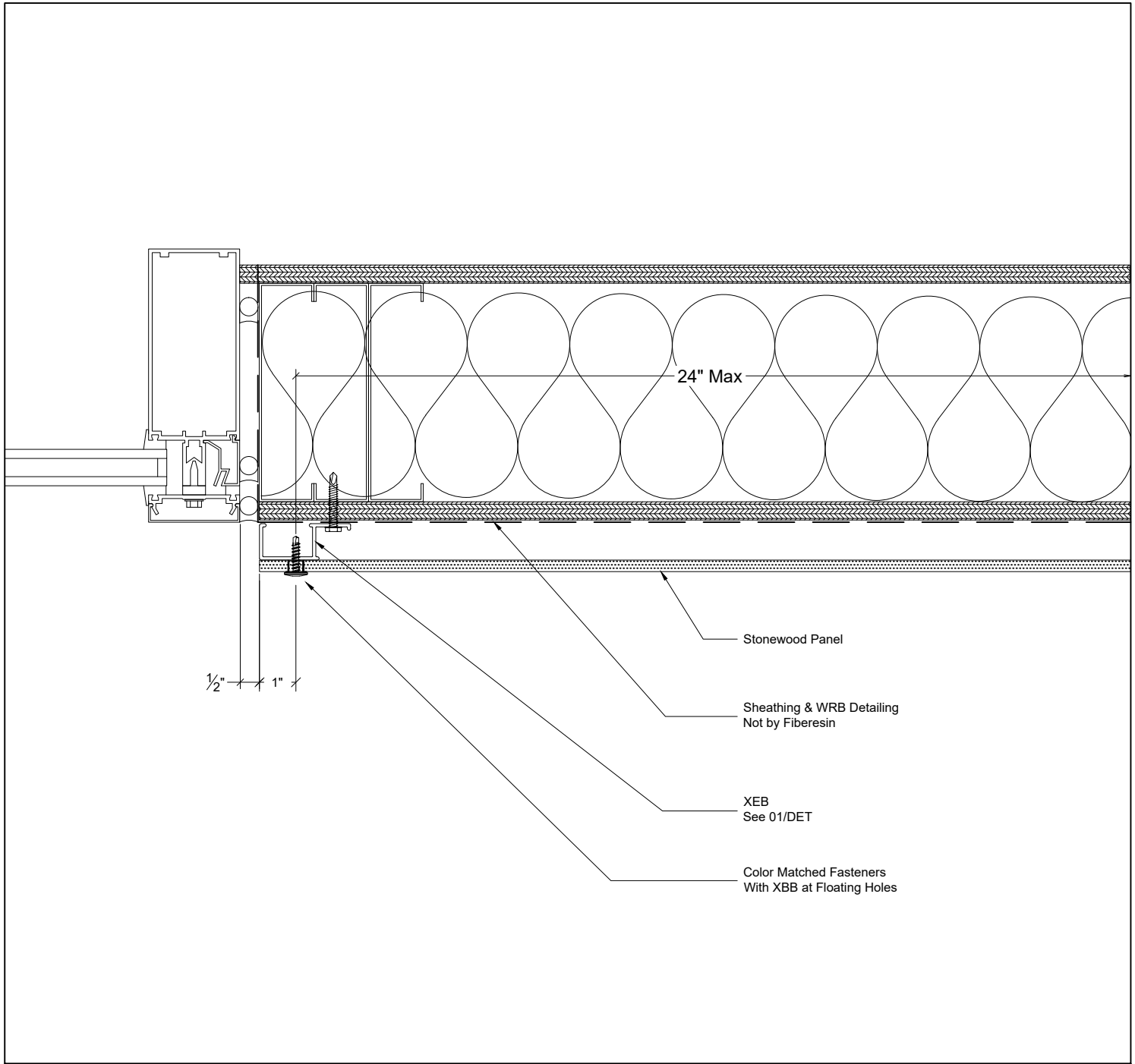
Plan - Panel at Inside Corner



Section - Panel at Window Header



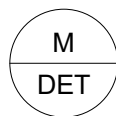
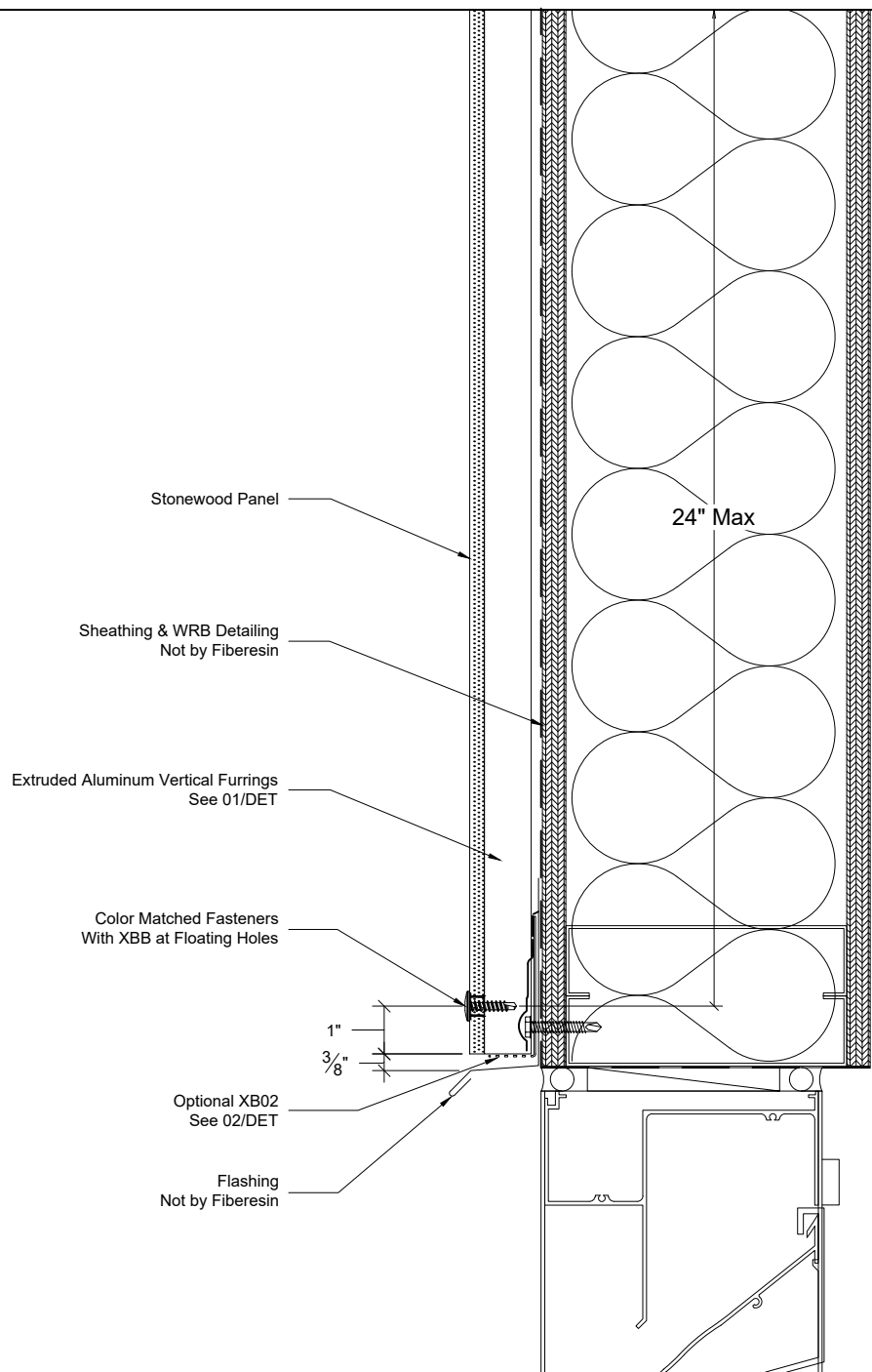
Section - Panel at Window Sill



L  
DET

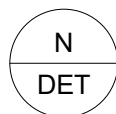
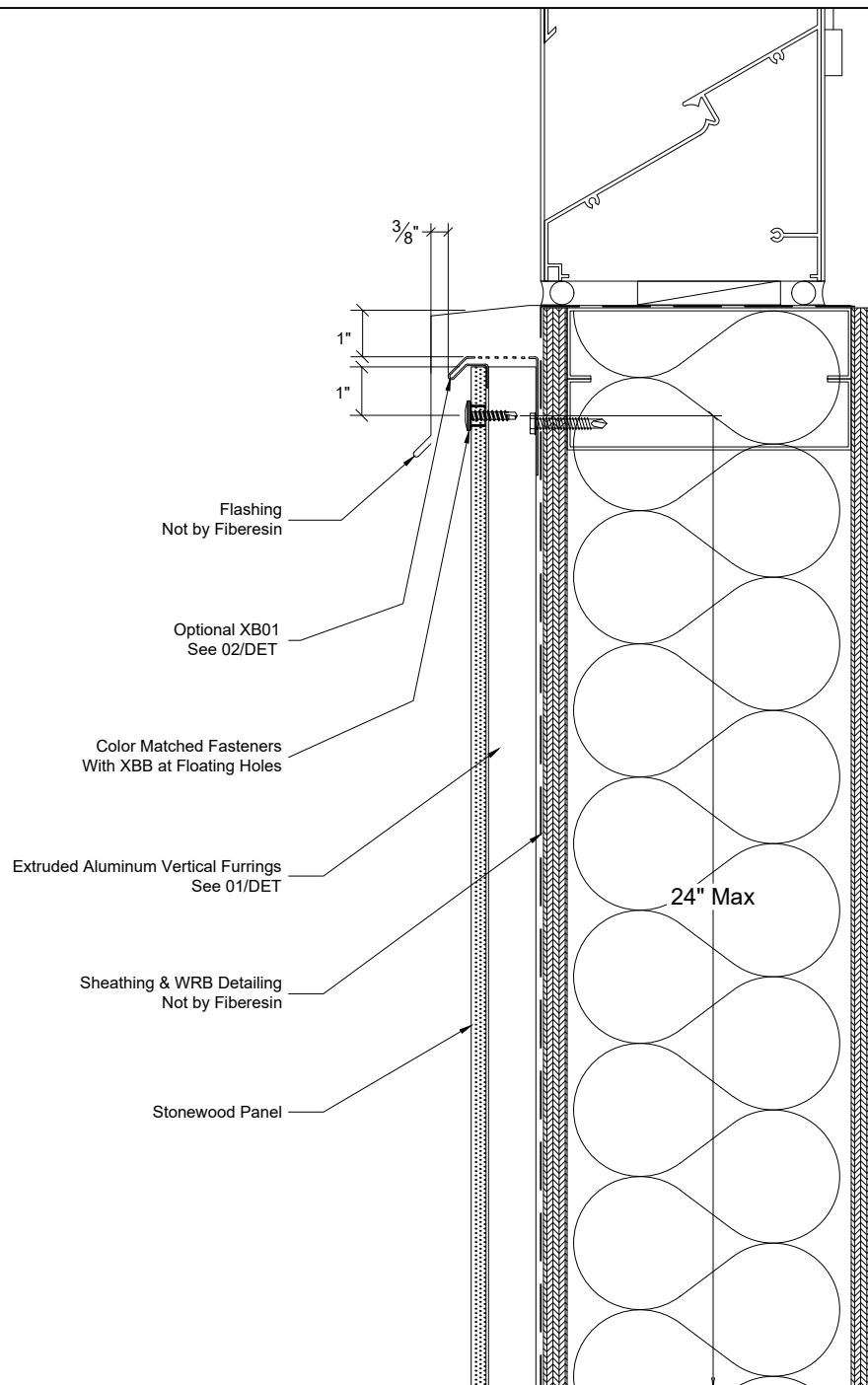
Plan - Panel at Window Jamb

# STONEWOOD EXPOSED FASTENING DETAIL SET

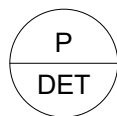
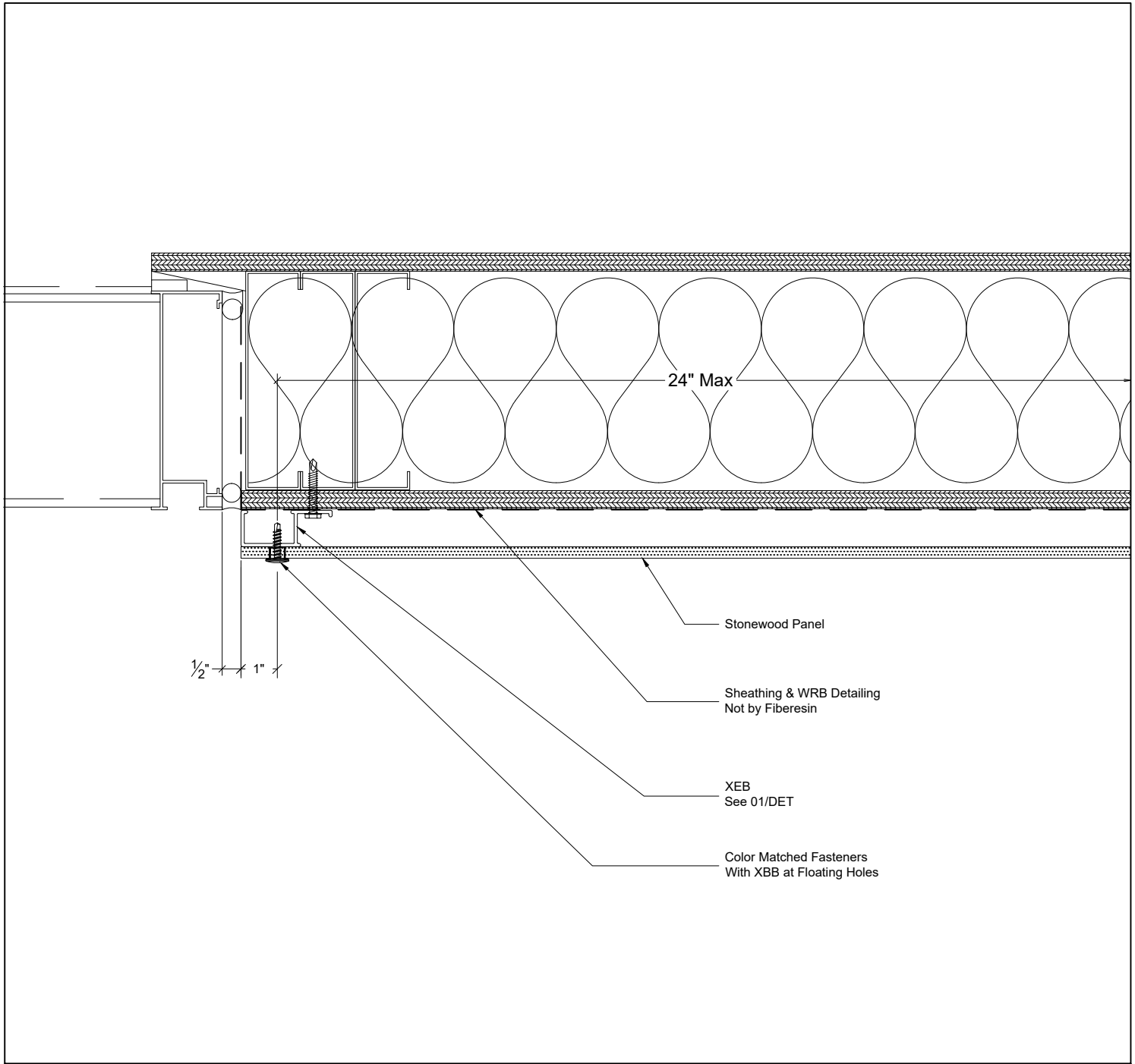


Section - Panel at Louver Header

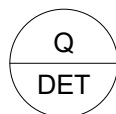
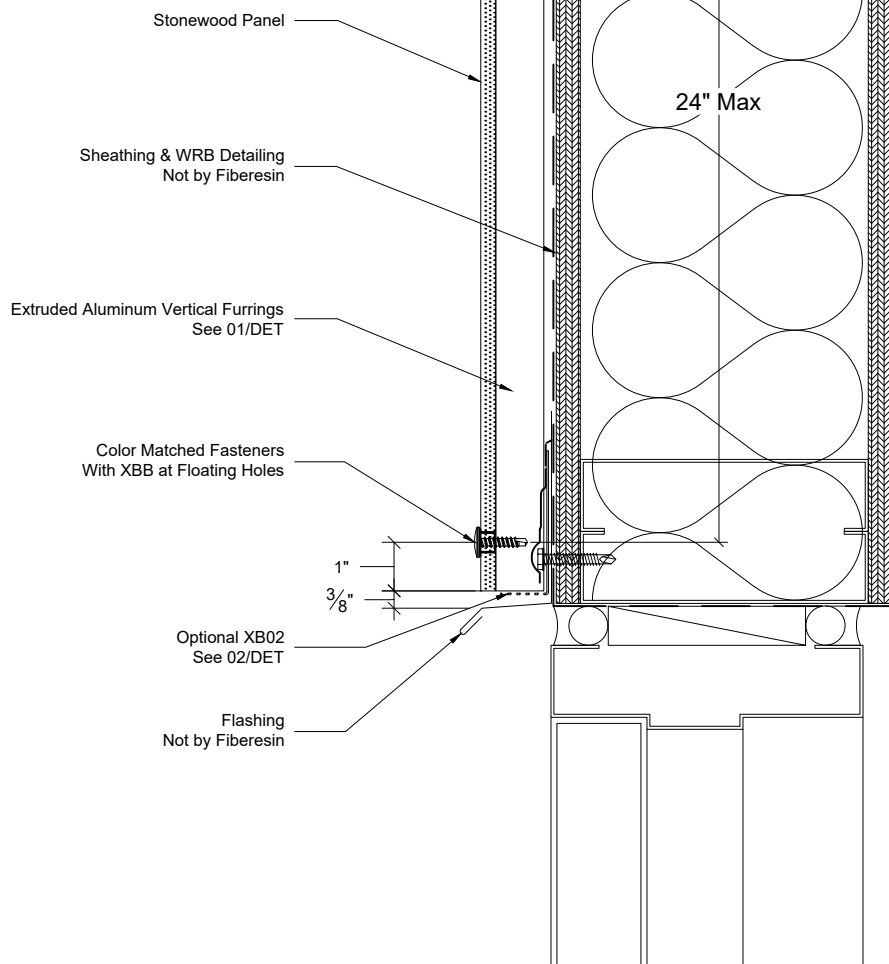




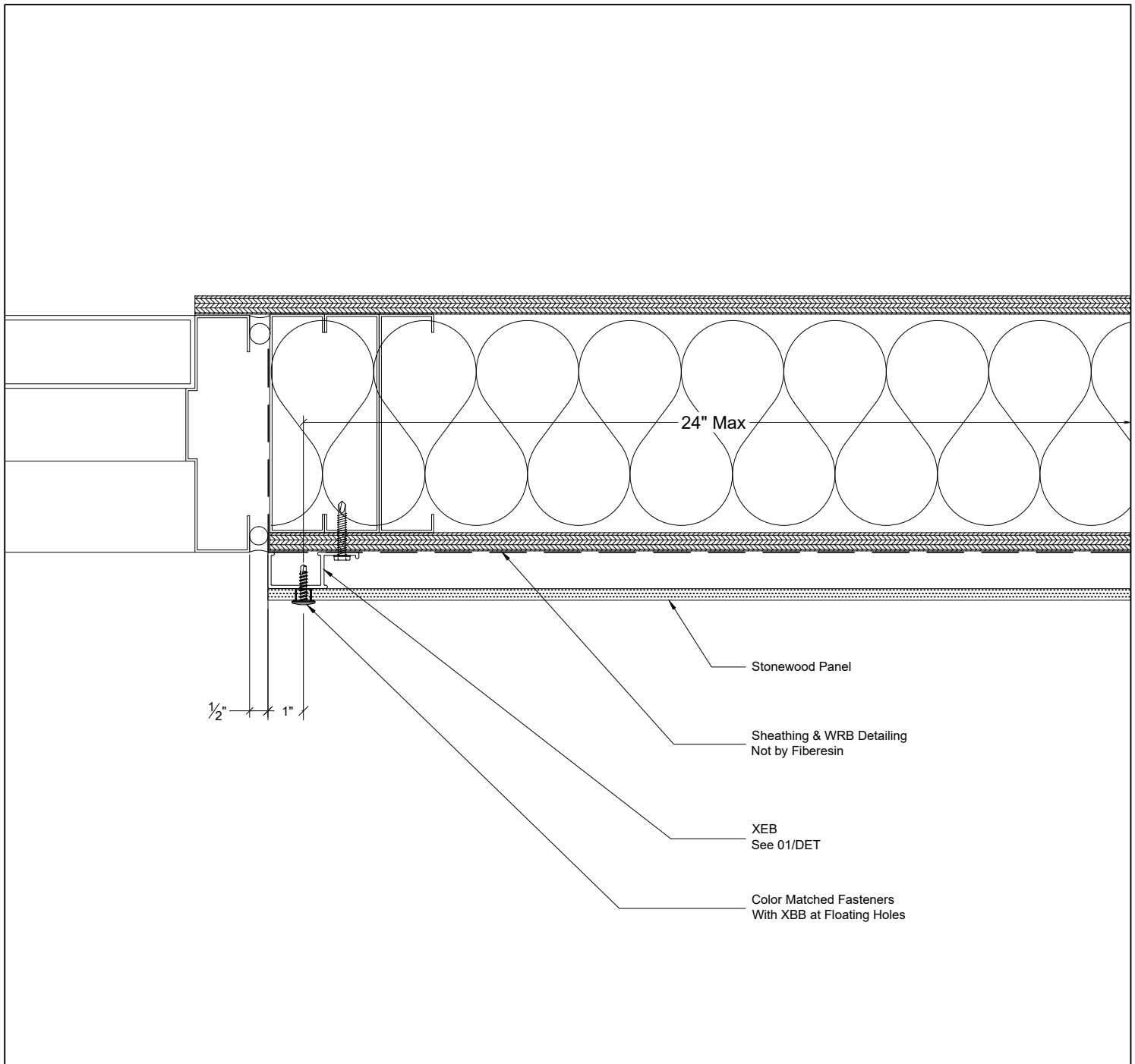
Section - Panel at Louver Sill



Plan - Panel at Louver Jamb



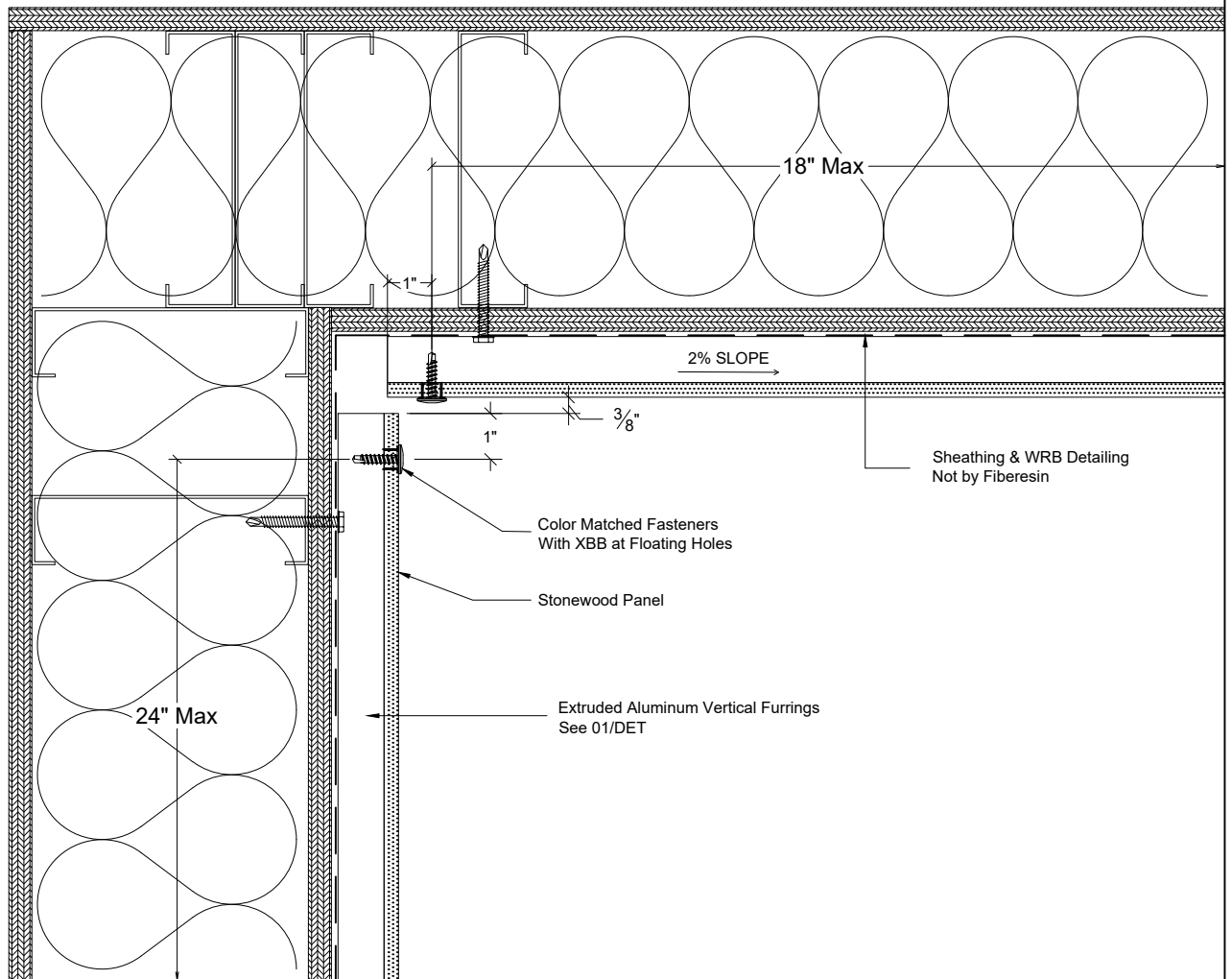
Section - Panel at Door Header



R  
DET

Plan - Panel at Door Jamb

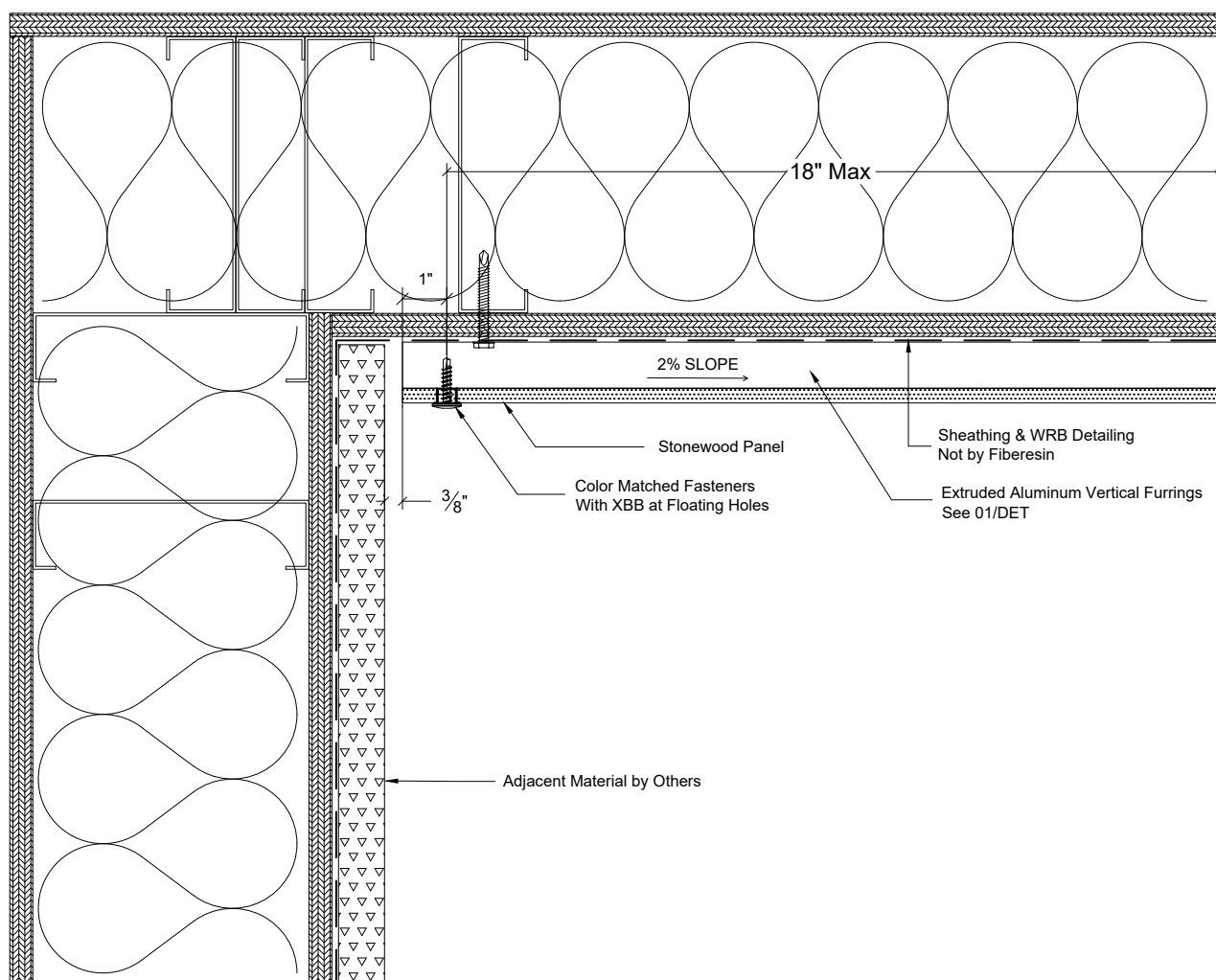
Fastener Spanning on  
Soffits are Reduced to a  
Maximum of 18" O.C.



S1  
DET

Section - Panel at Wall to Soffit Transition

Fastener Spanning on  
Soffits are Reduced to a  
Maximum of 18" O.C.



S2  
DET

Section - Panel at Wall to Soffit Transition

Fastener Spanning on  
Soffits are Reduced to a  
Maximum of 18" O.C.

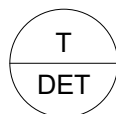
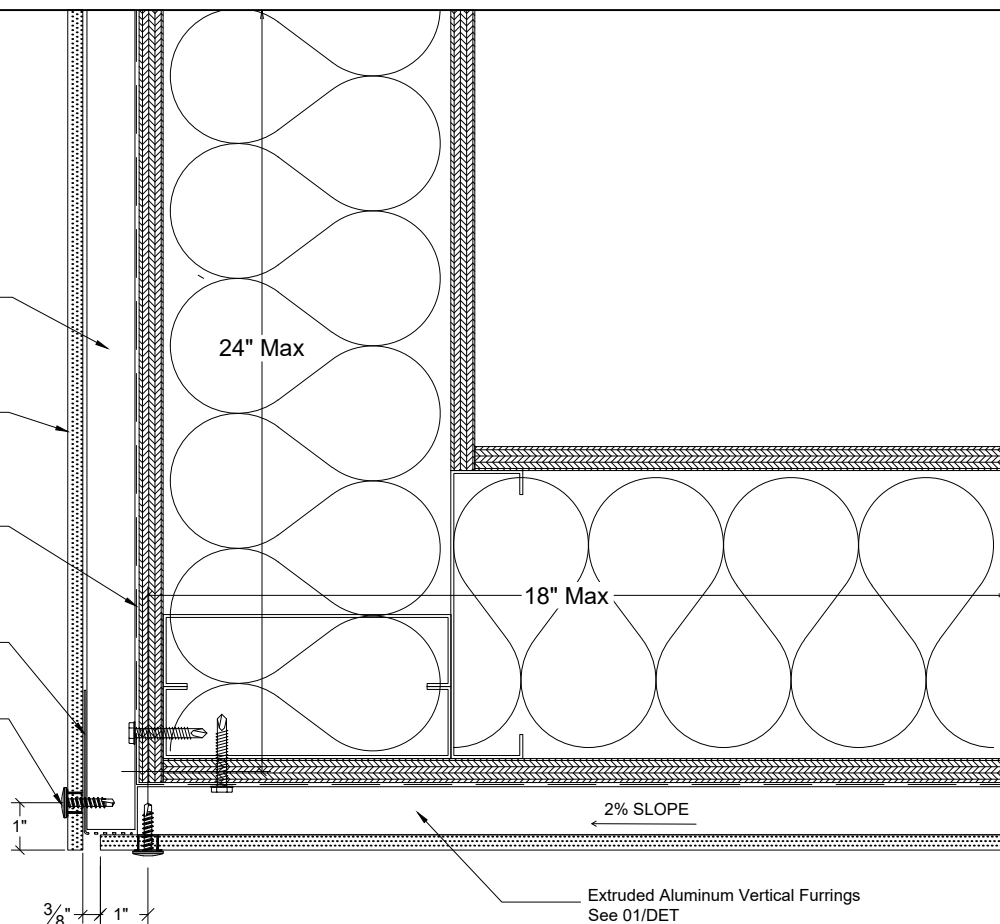
Extruded Aluminum Vertical Furrings  
See 01/DET

Stonewood Panel

Sheathing & WRB Detailing  
Not by Fibresin

Optional XB02  
See 02/DET

Color Matched Fasteners  
With XBB at Floating Holes



Section - Soffit to Fascia Transition: Drainage Plane

Fastener Spanning on  
Soffits are Reduced to a  
Maximum of 18" O.C.

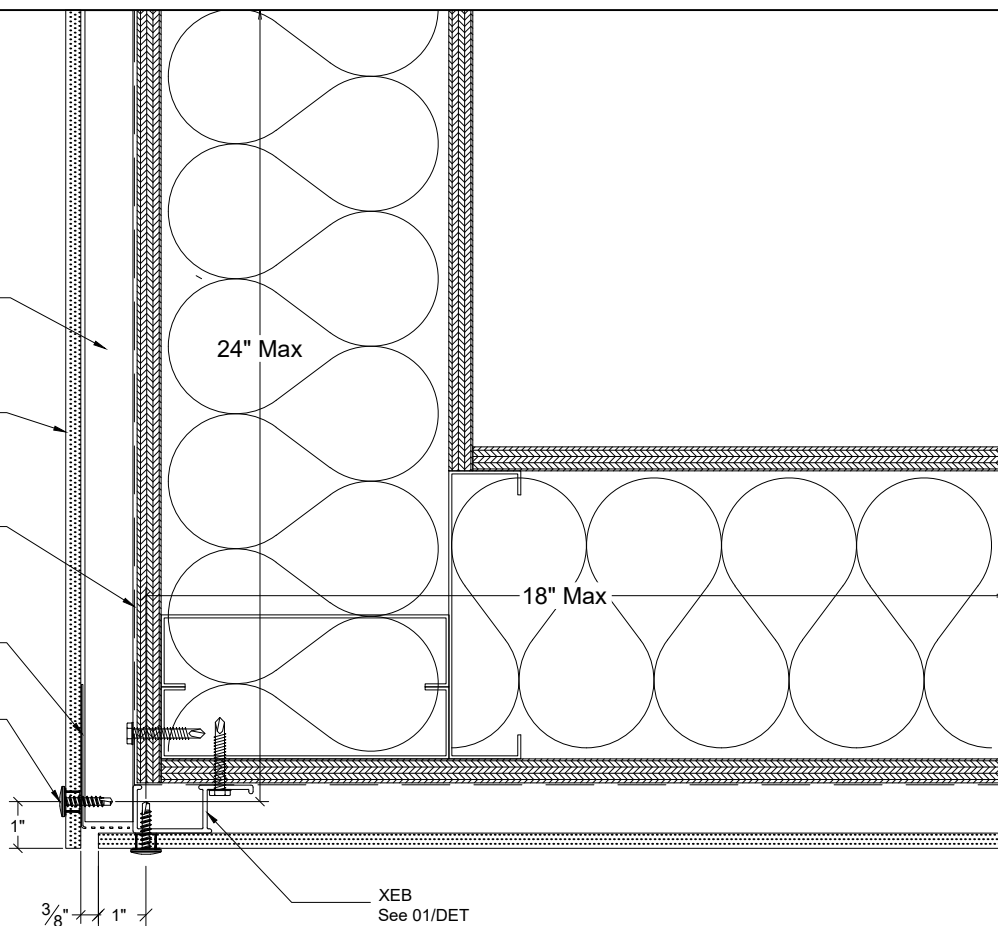
Extruded Aluminum Vertical Furrings  
See 01/DET

Stonewood Panel

Sheathing & WRB Detailing  
Not by Fibresin

Optional XB02  
See 02/DET

Color Matched Fasteners  
With XBB at Floating Holes



Section - Soffit to Fascia Transition: Non-Drainage Plane