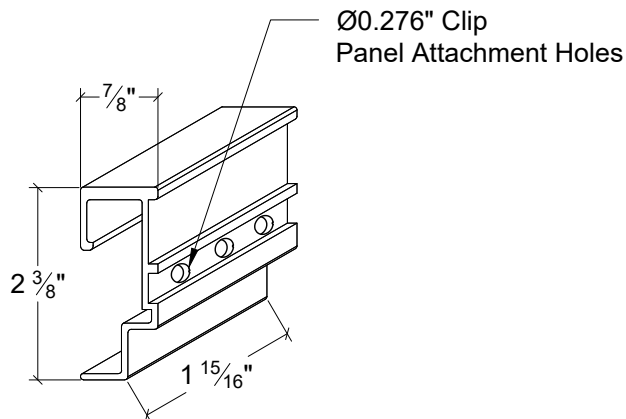
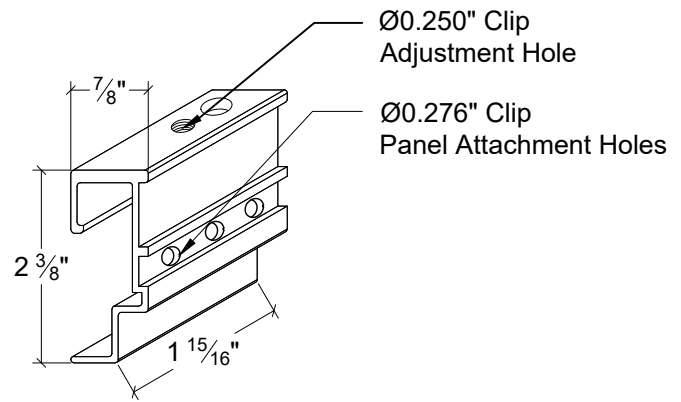


Extruded aluminum furring must be attached to structural members designed to support the dead and live loading of the entire wall system. The following details do not specify, suggest, or imply the attachment between the structure and aluminum furring. The customer is responsible for the structural engineering of attachment to structure.

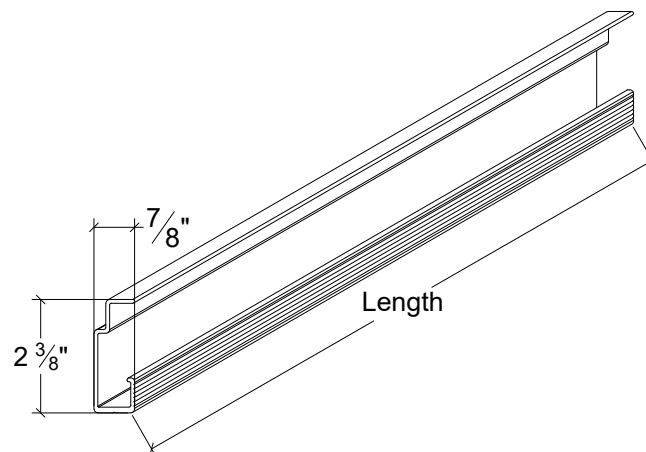
KEY	Elevation
DET	



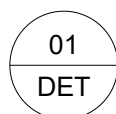
CFCS:  
Standard Clip Extrusion  
Structural Grade Aluminum Alloy  
Factory Mill Finished



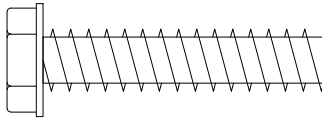
CFCAC:  
Adjustable Clip Extrusion  
Structural Grade Aluminum Alloy  
Factory Mill Finished  
Required at Upper Left and Right Corners of Panels



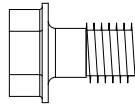
CFRM:  
Continuous Rail Extrusion  
Structural Grade Aluminum Alloy  
Factory Mill Finished



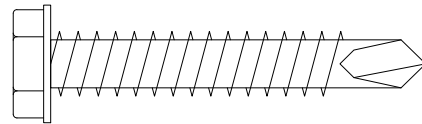
Concealed Fastener System Parts Catalog



**CFCAB:**  
Adjustable Leveling Bolt  
Every CFCAC Clip Includes One

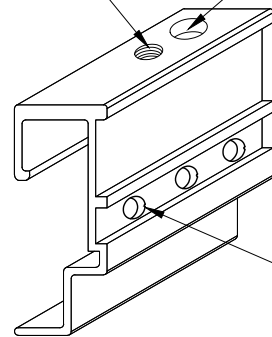


**CFF5:**  
Clip Fastener, 2 per Panel Clip (CFCS & CFCAC)  
Used to Attach Clips to Stonewood Panels



**CFCSS:**  
Adjustable Panel Attachment Clip Set Screw  
Every CFCAC Clip Includes One  
Use Only 1 per Panel

Use CFCAB Adjustable Panel Attachment Clip Bolt to Adjust Panel for Level in Top Corners of Panels

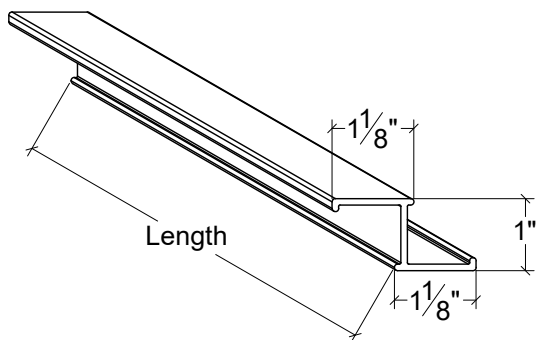


Use CFCSS Adjustable Panel Attachment Clip Set Screw to Secure Clip to Rail  
Only Use 1 CFCSS per Panel

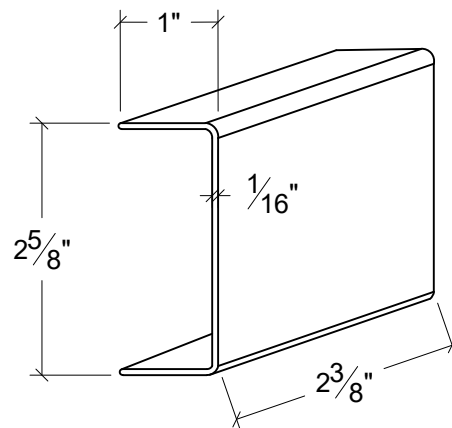
Use CFF5  
2 per Panel Clip (CFCS & CFCAC)



Concealed Fastener System Parts Catalog



XZB - Vertical Attachment Furring  
Structural Grade Aluminum Alloy Extrusion  
Factory Finished Black



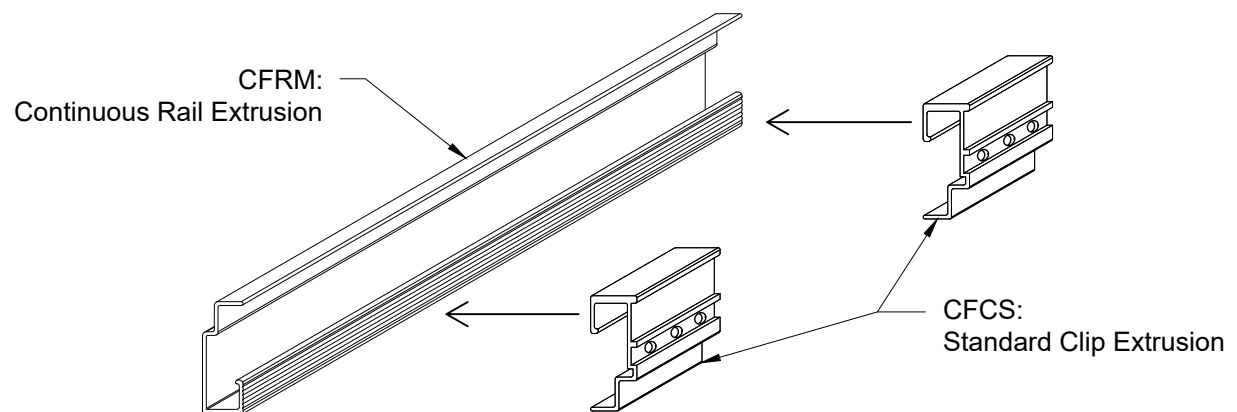
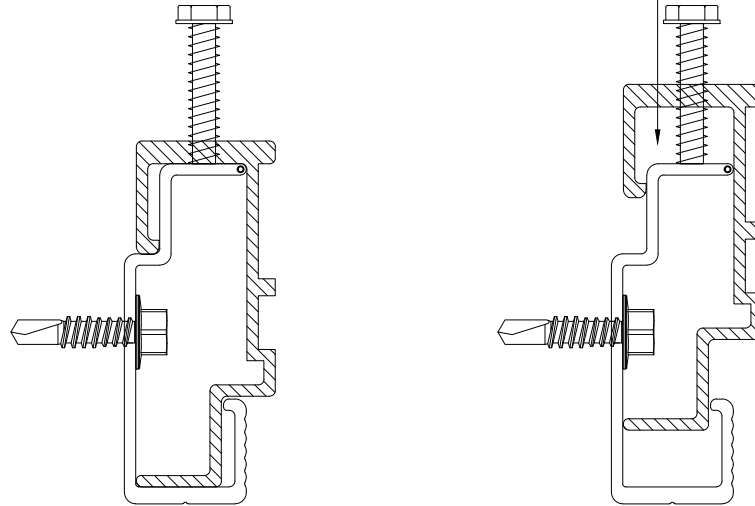
CFB01:  
Rail Cover, 1/16" Plastic, Prefinished Black  
Provided in 2-3/8" Lengths  
Applied to CFRM Panel Rails at Vertical Joints



Concealed Fastener System Parts Catalog

## Assembled CFRM Carrier Rail And CFCAC Clip & Adjustability

APPROX.  $\frac{1}{2}$ " [12mm] ADJUSTABILITY

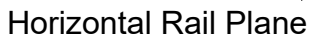


04

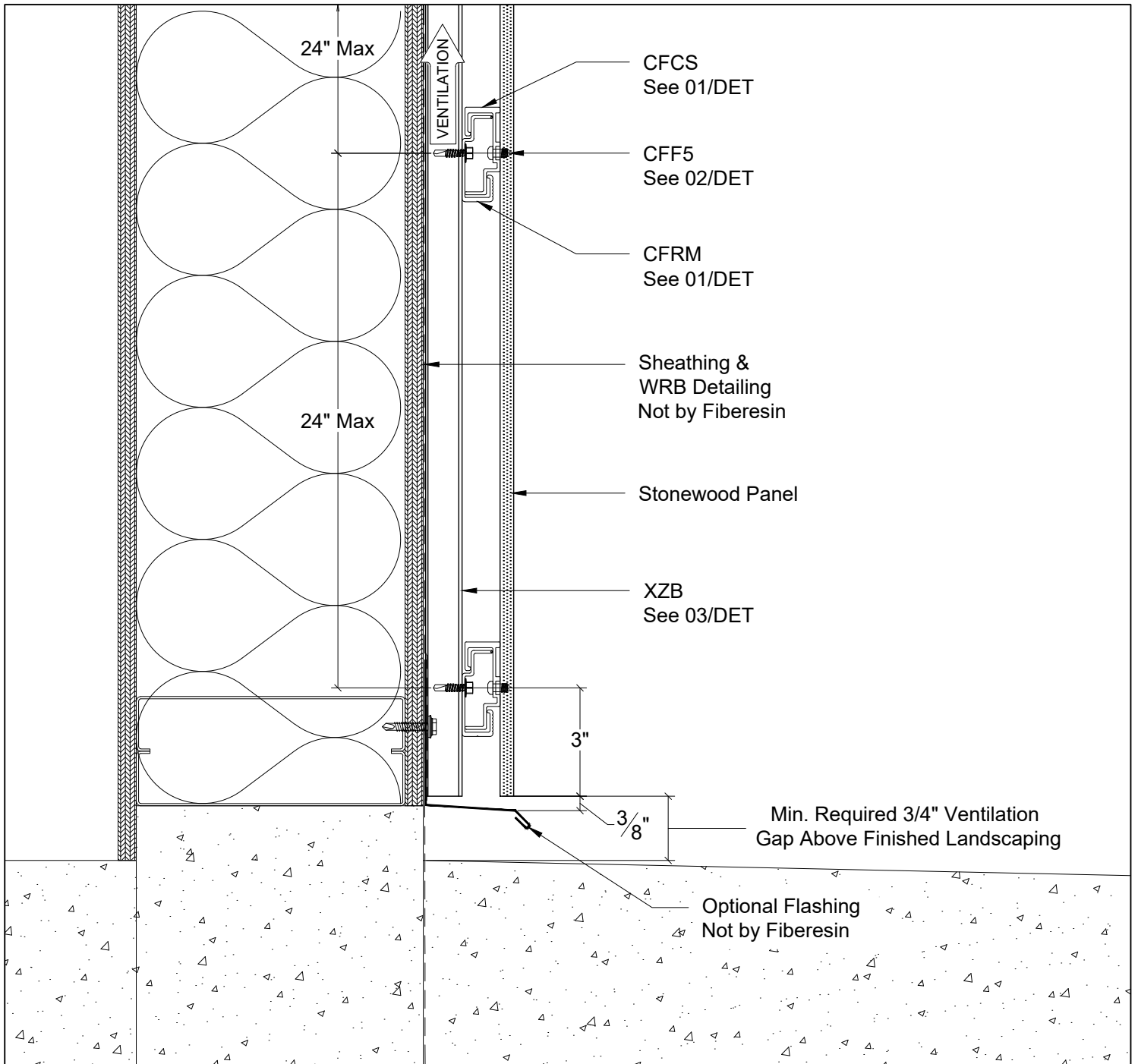
DET

Concealed Fastener System Parts Catalog

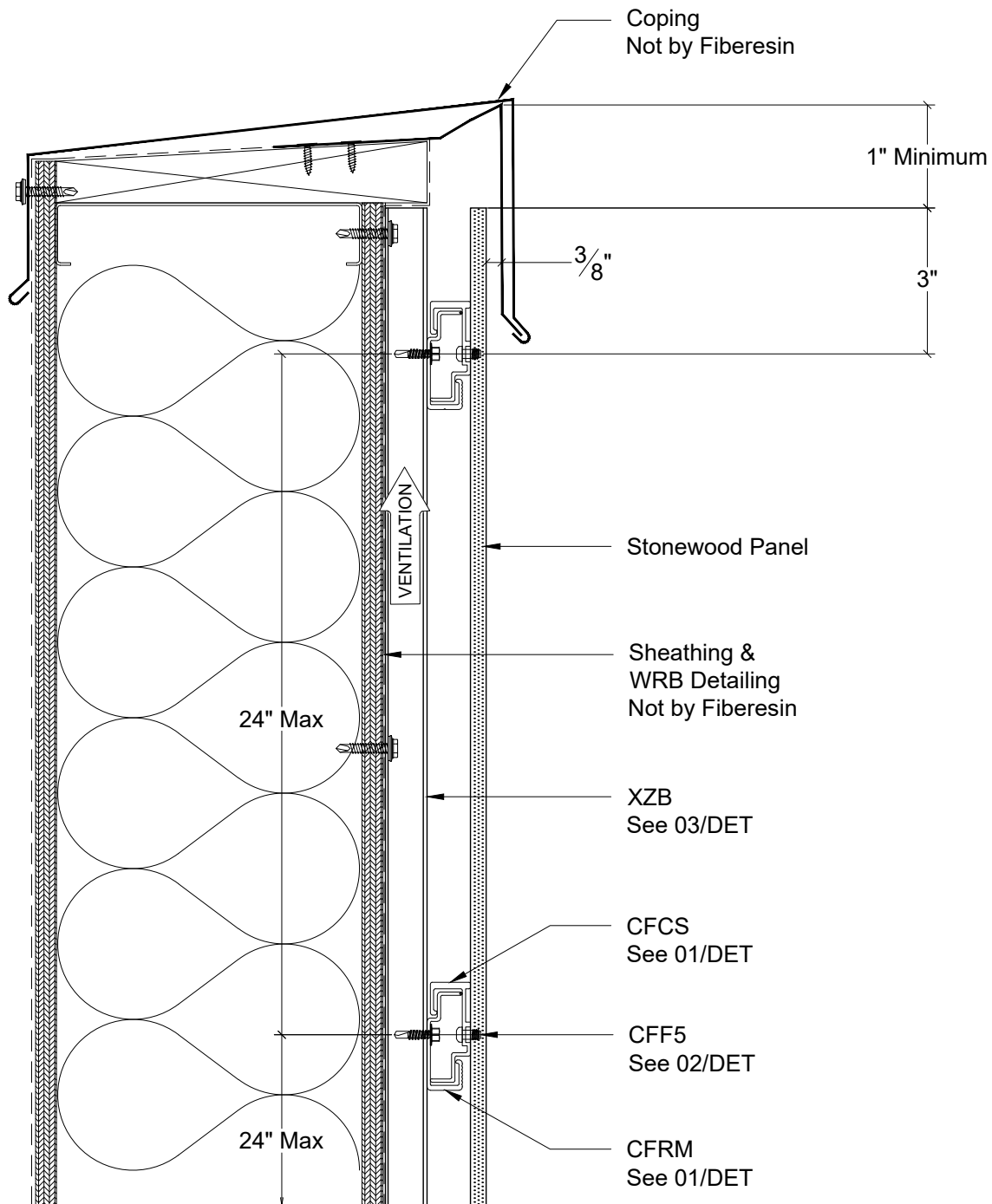
MAX HOLE SPANS = 24" O.C.



## Concealed Fastener System Parts Catalog



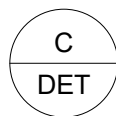
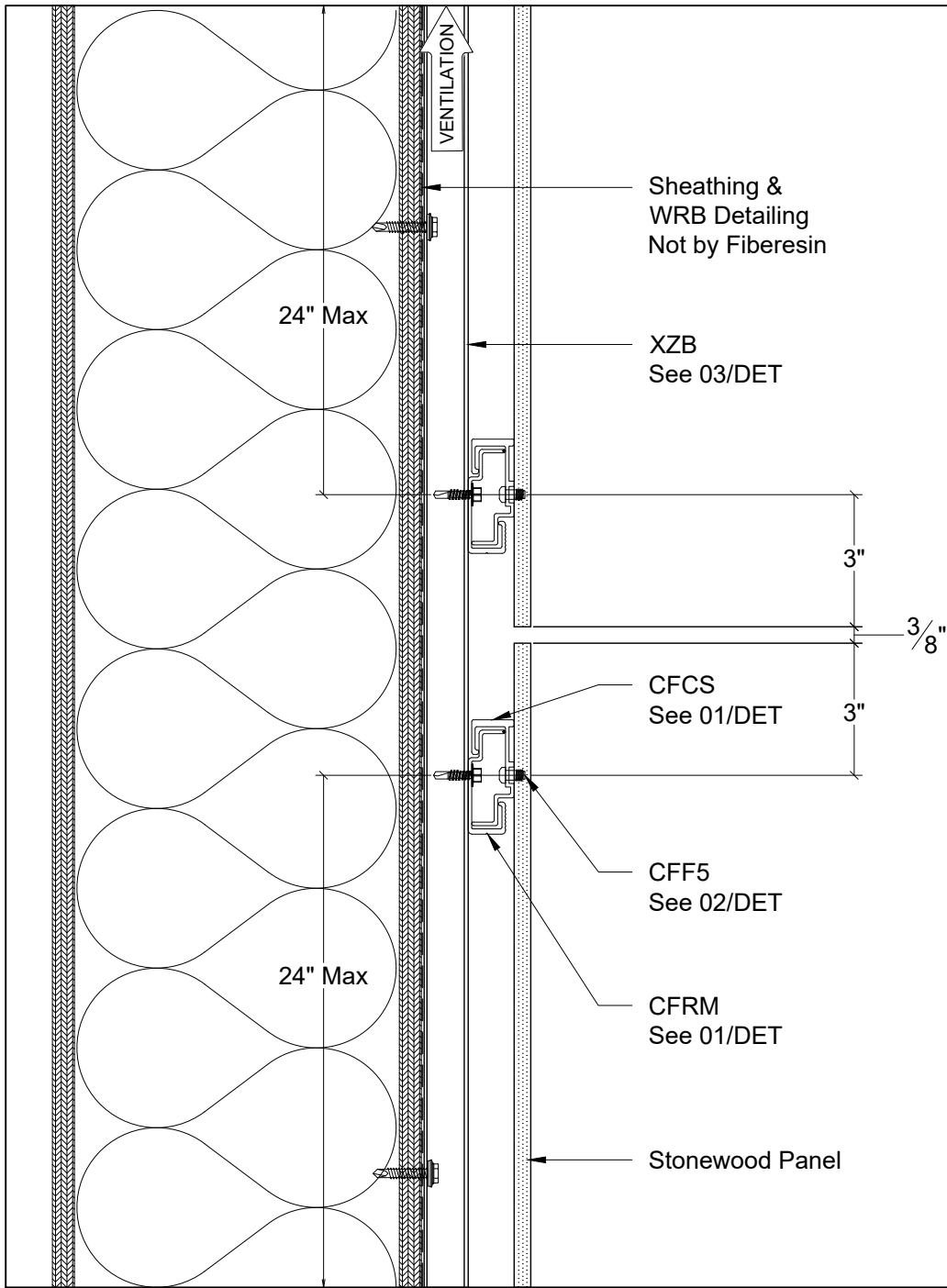
**A**  
**DET**
 Section - Panel at Bottom Termination



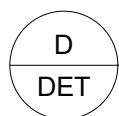
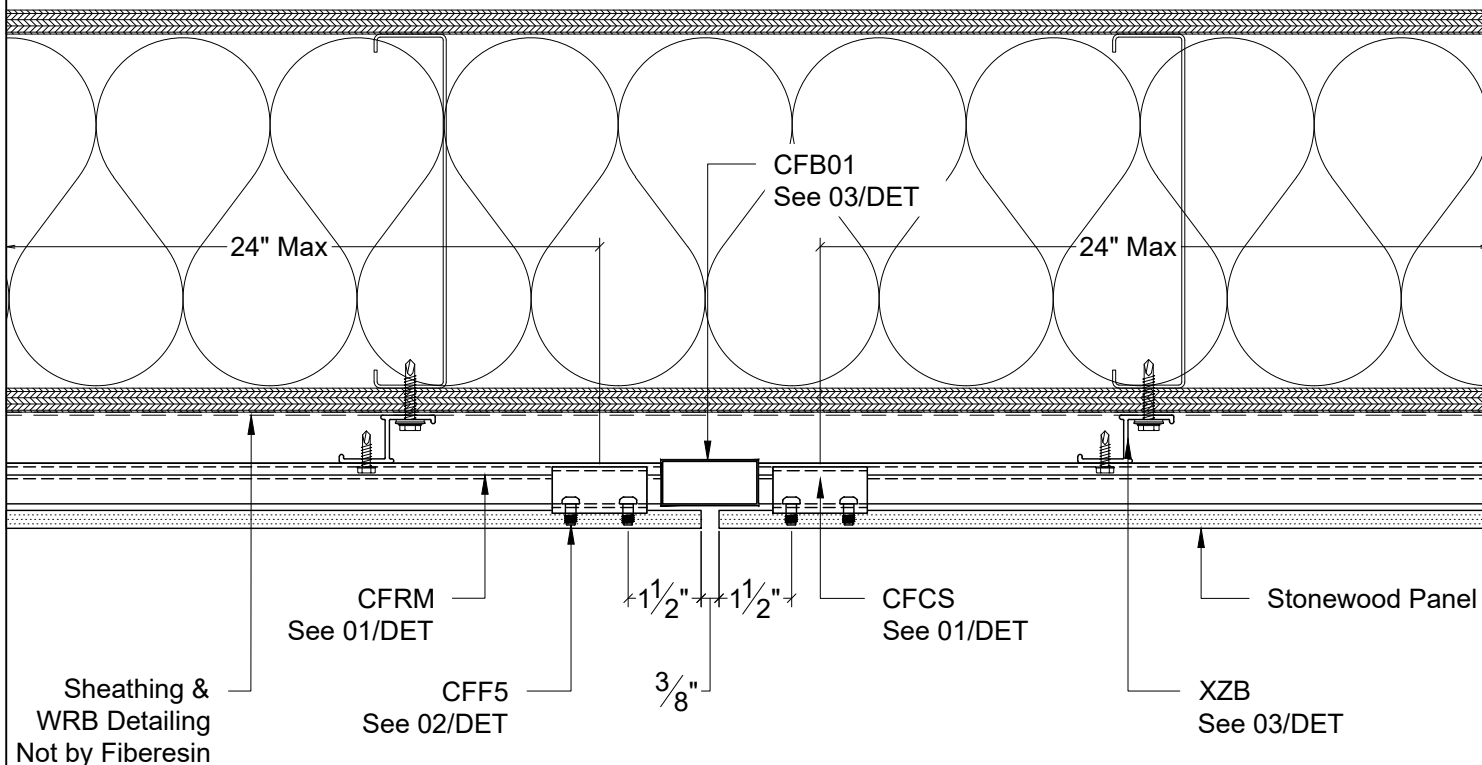
B  
DET

Section - Panel at Top Termination

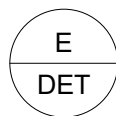
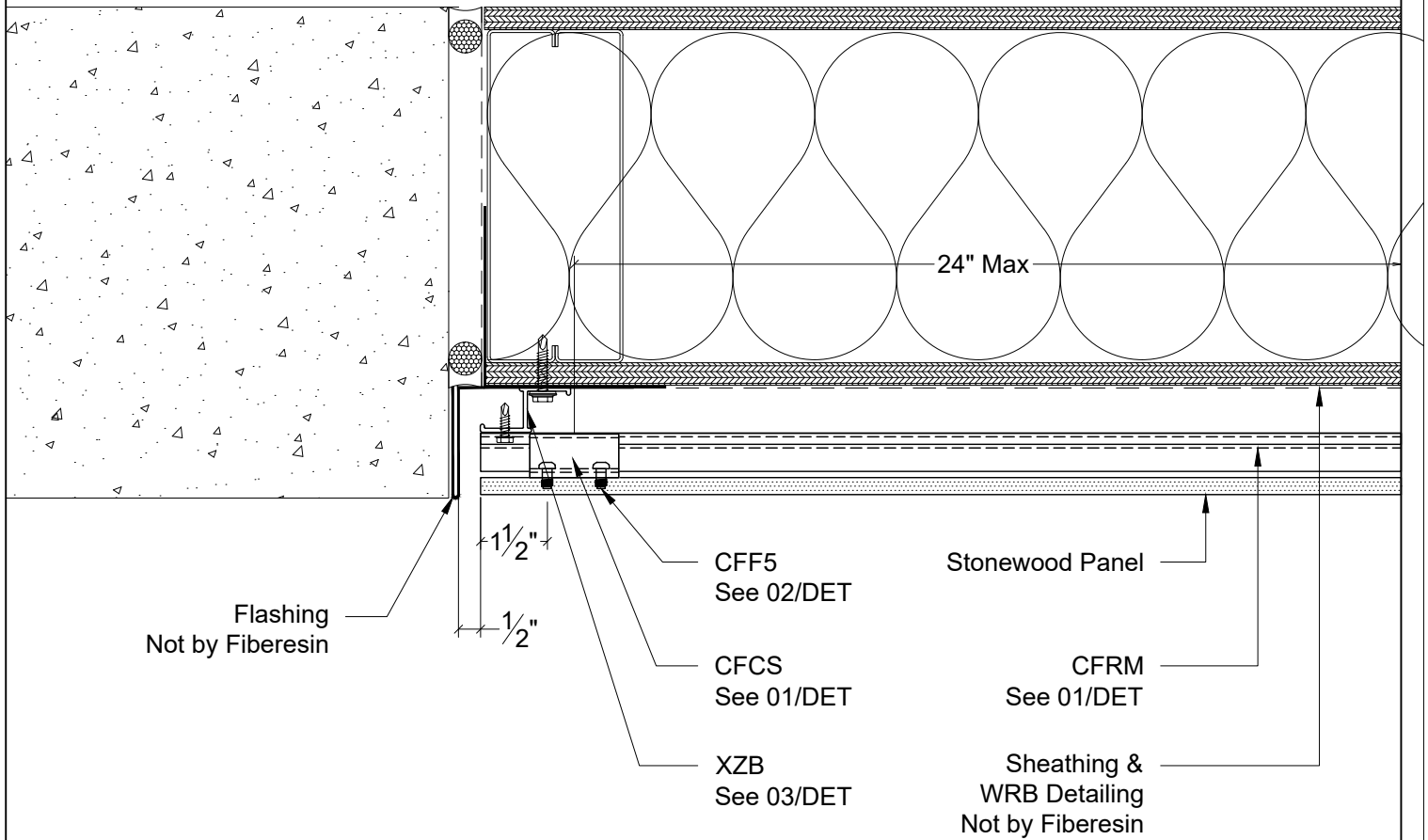




Section - Panel at Horizontal Joint

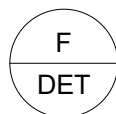
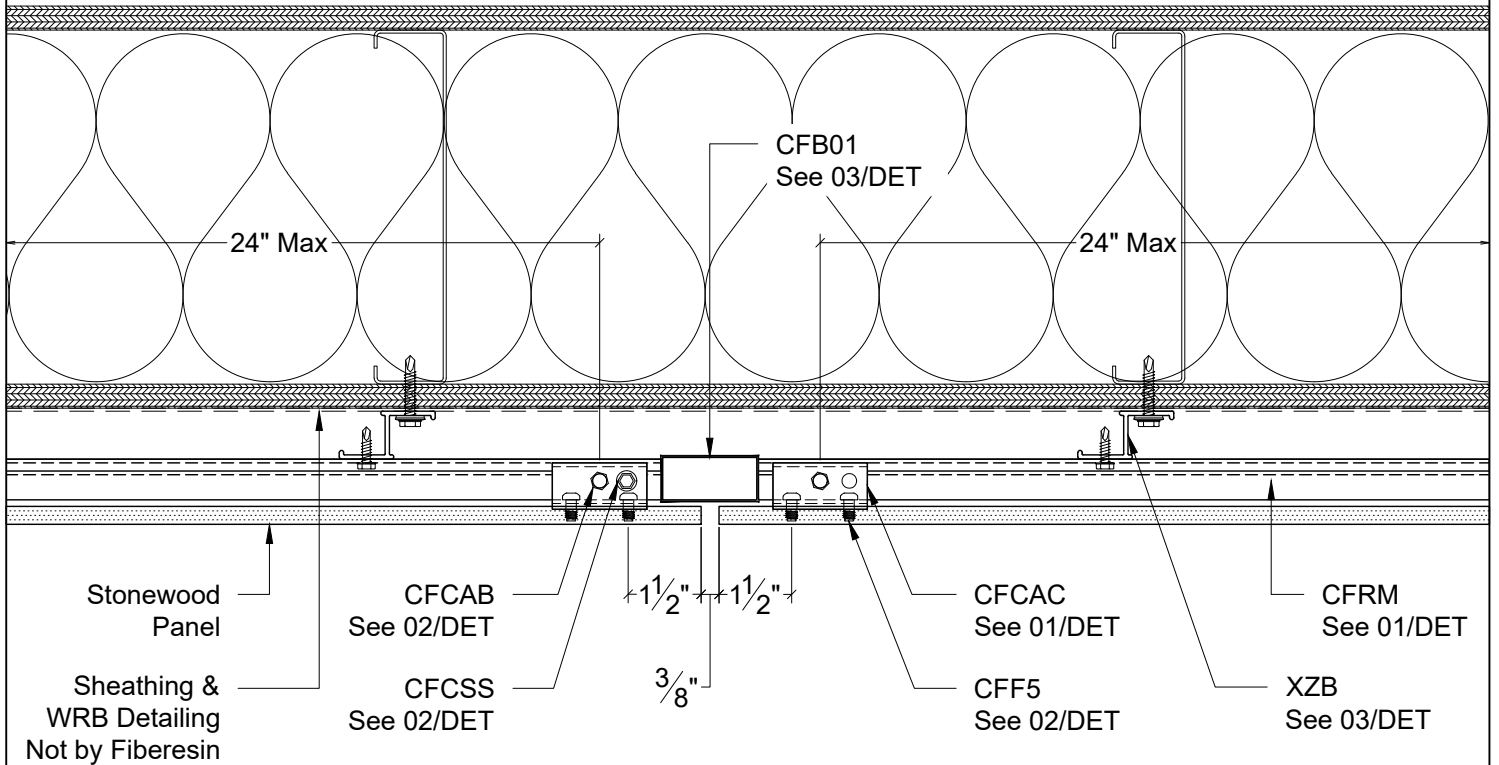


Plan - Panel at Vertical Joint

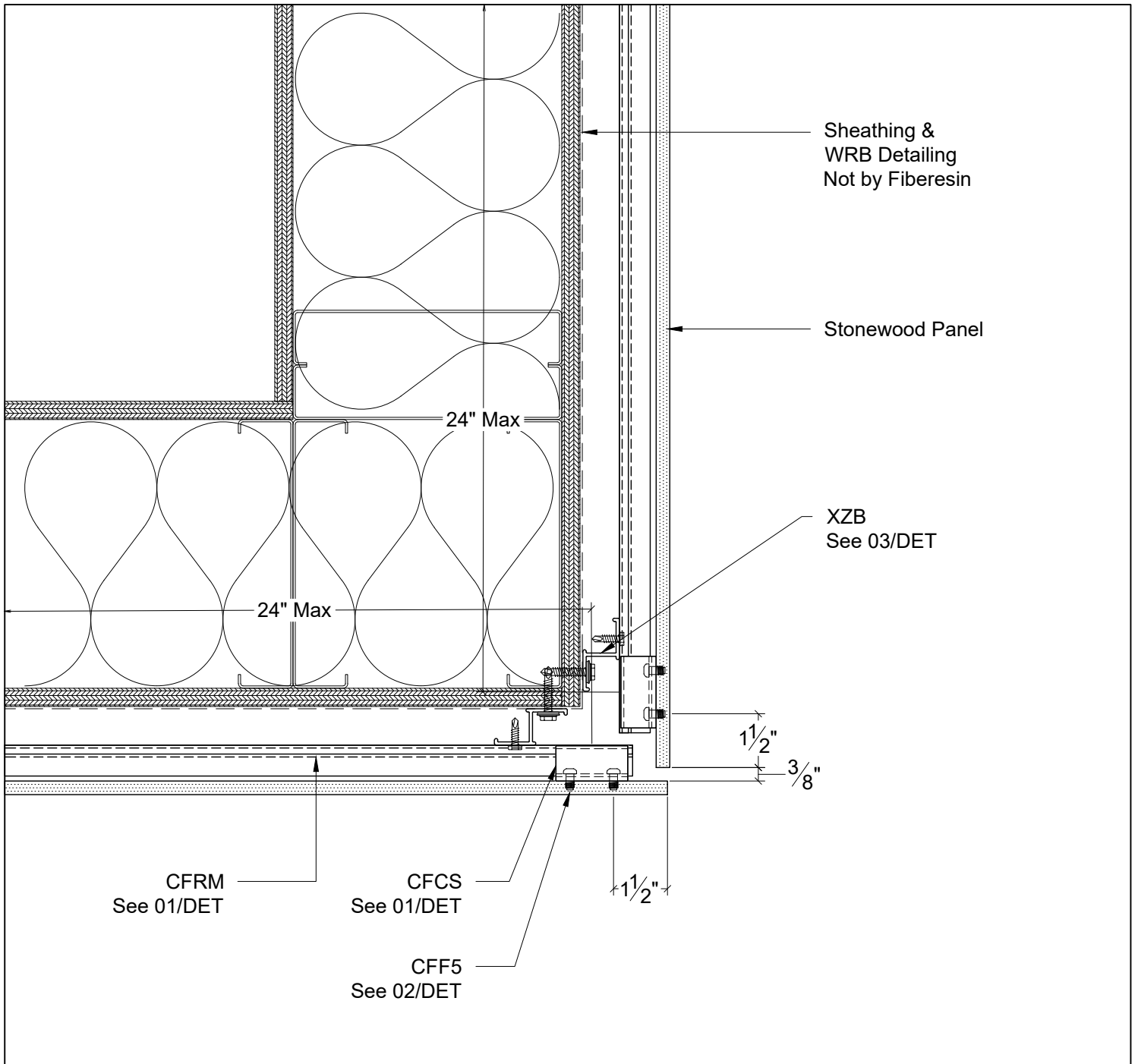


Plan - Panel at Forced Termination

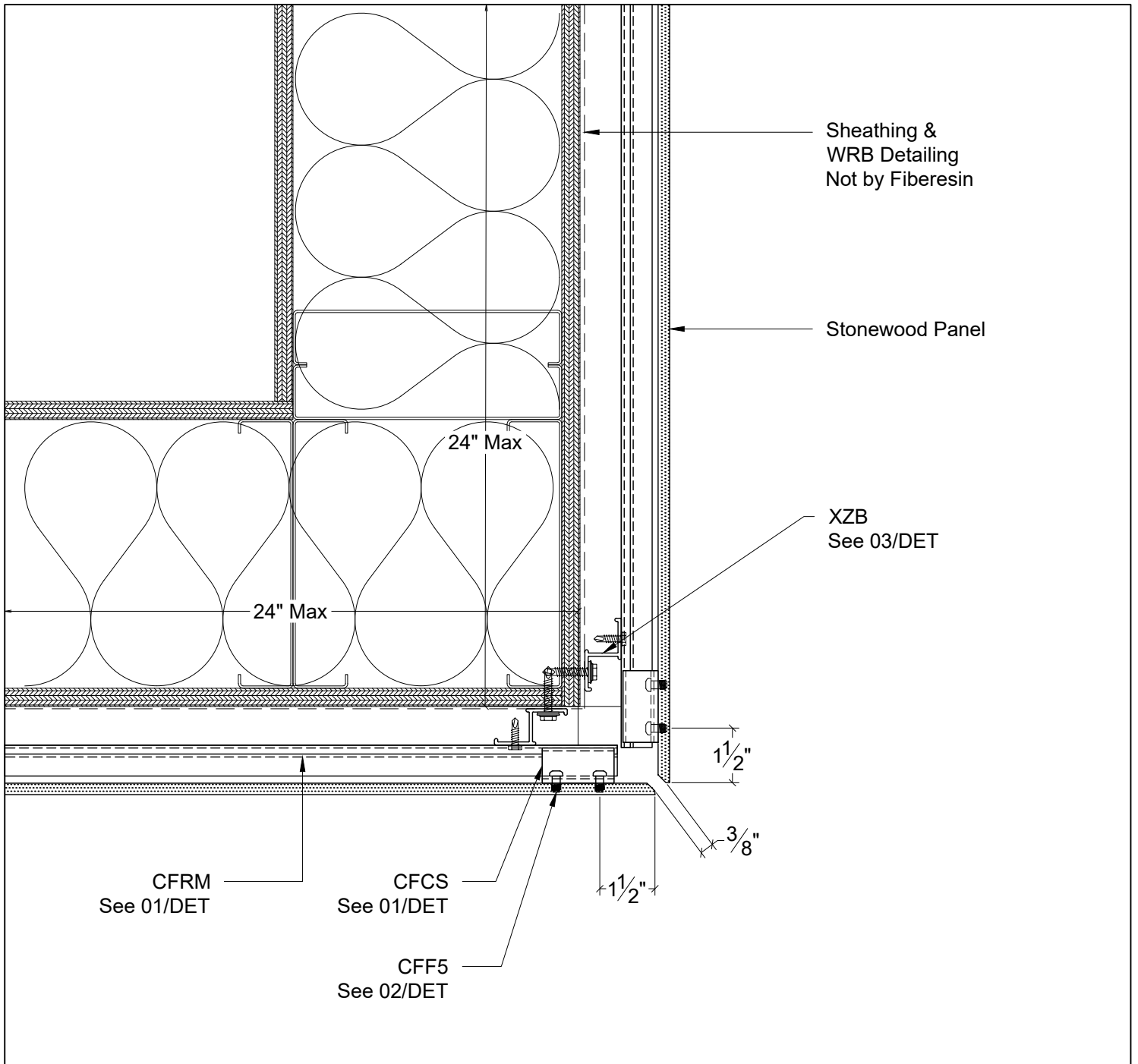
Install CFCAC On the Top  
Corners of the Panels. Only  
Install 1 CFCSS per Panel to  
Create a Fixed Point.



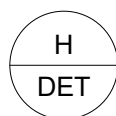
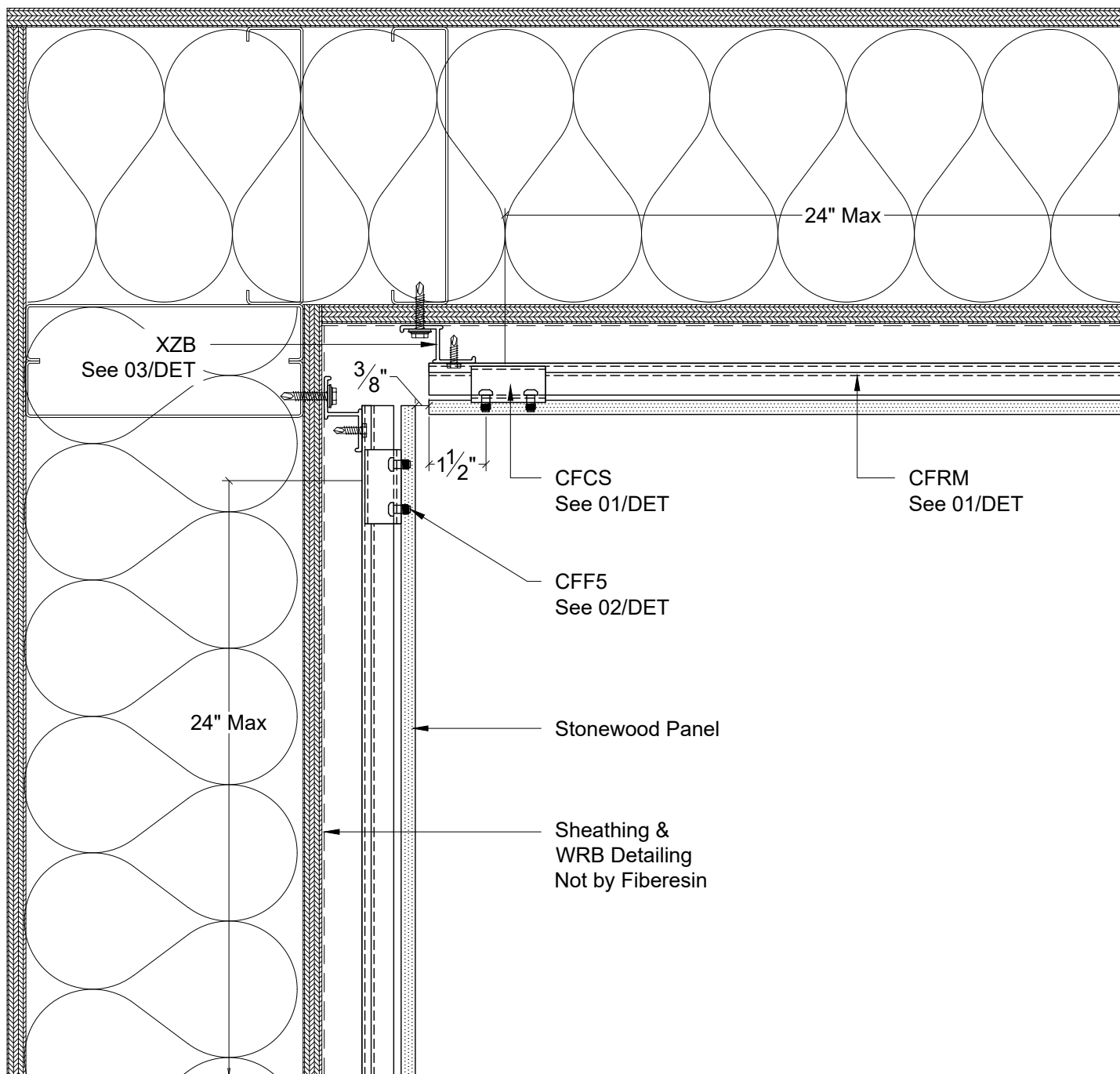
Plan - Panel at Fixed Point at Top Corner



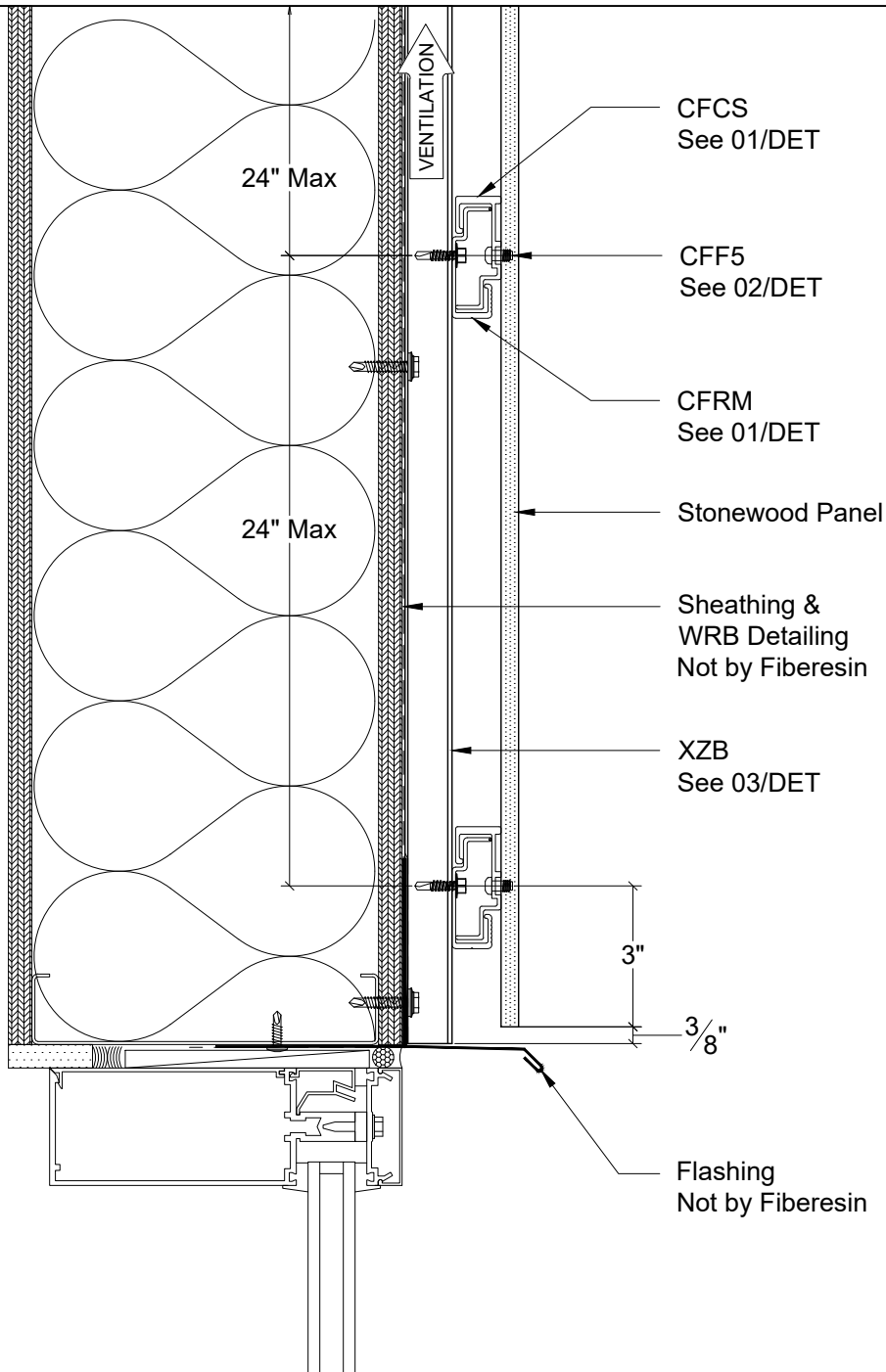
G1 Plan - Panel at Outside Corner: Primary  
DET



G2 Plan - Panel at Outside Corner: Alternative  
DET

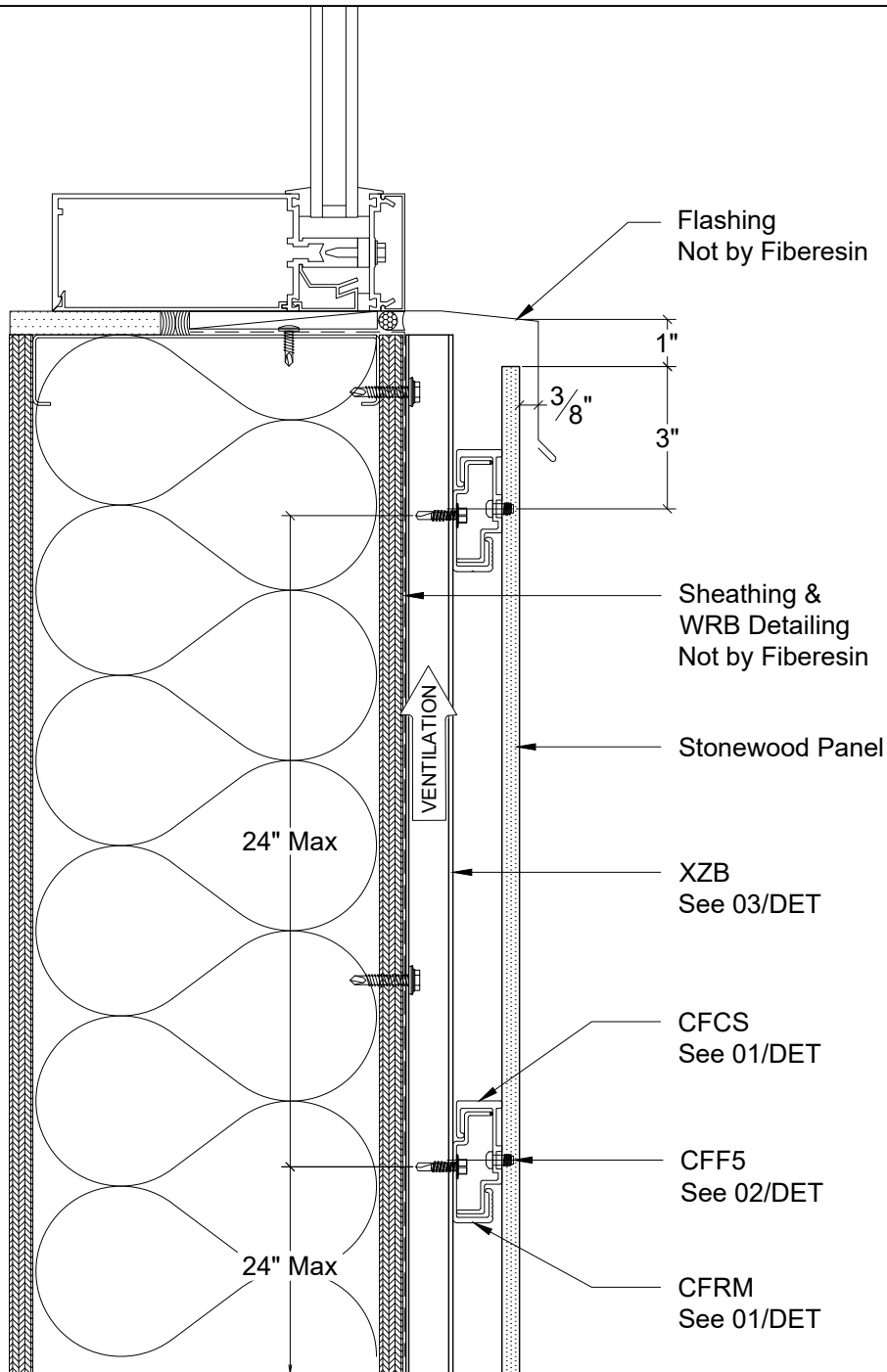


Plan - Panel at Inside Corner

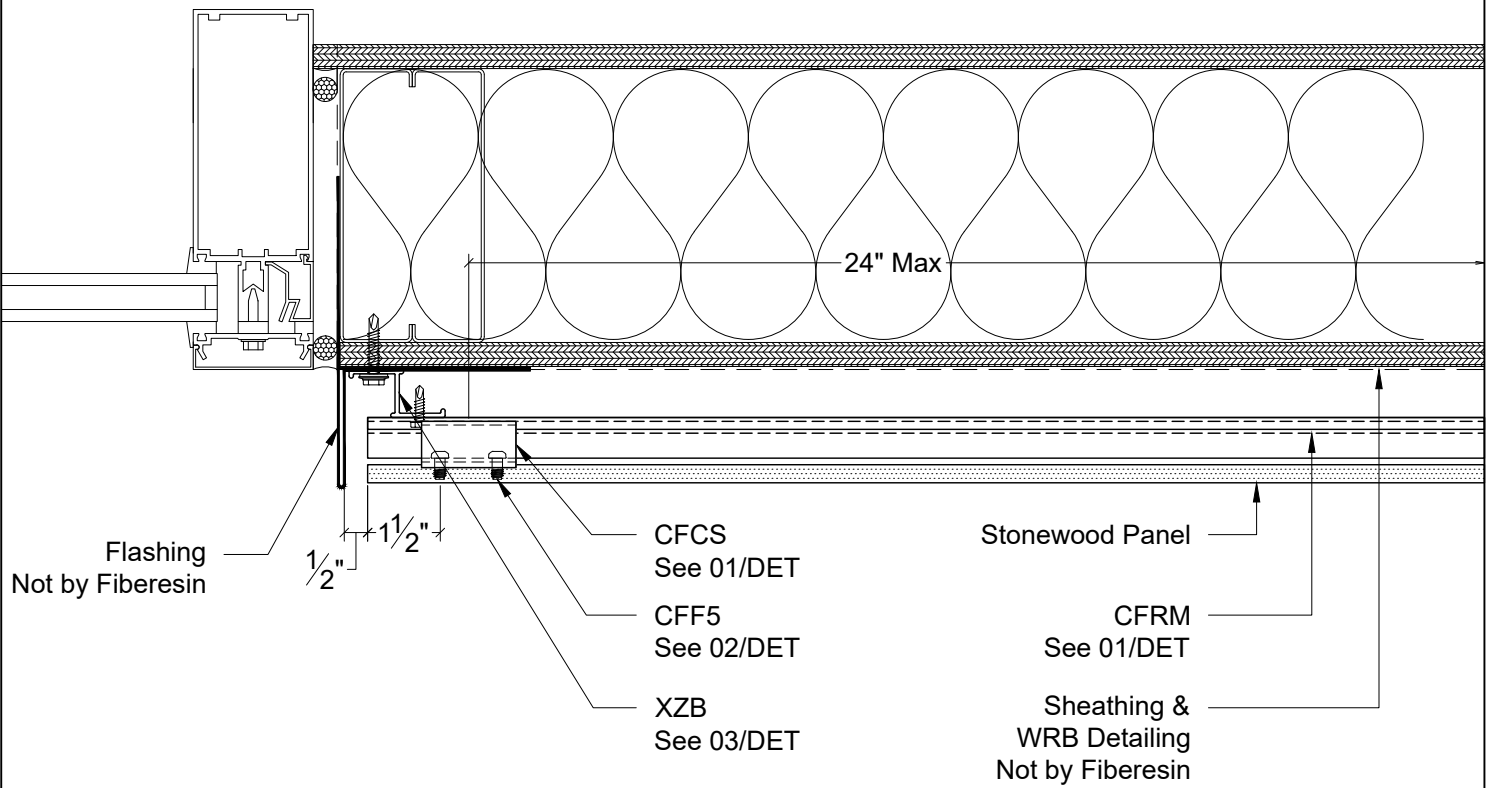


J  
DET Section - Panel at Window Header

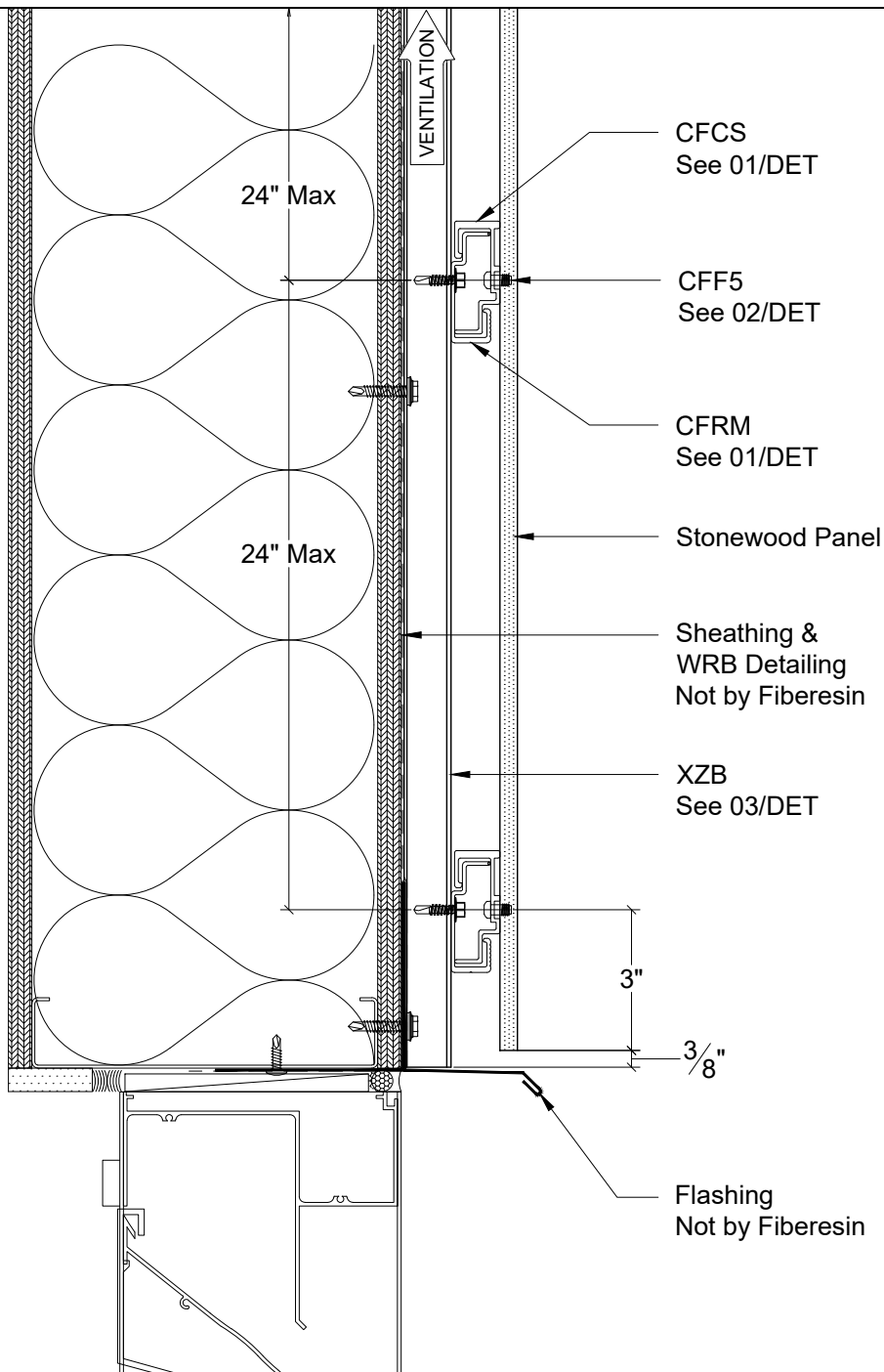




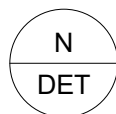
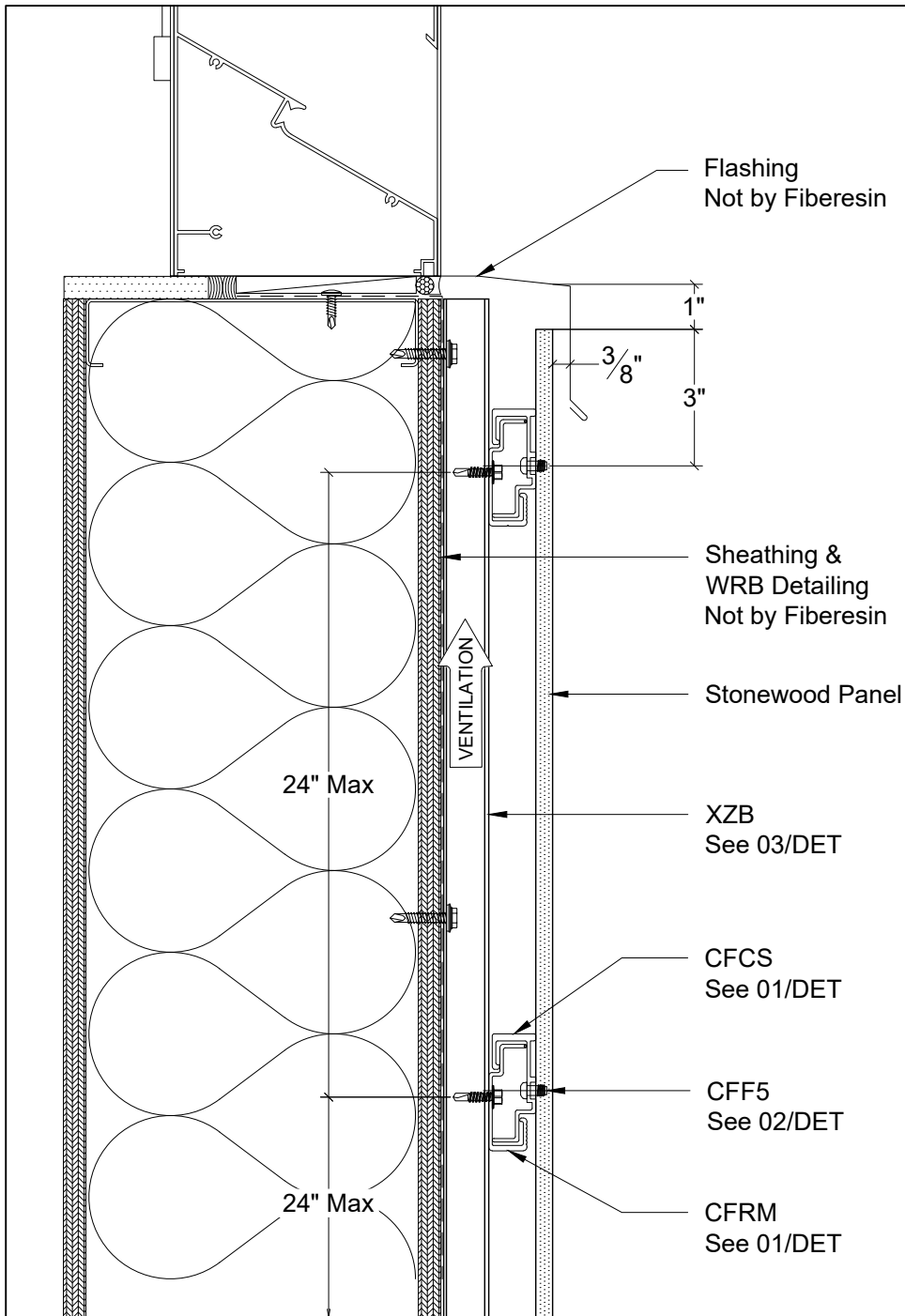
K  
 DET  
 Section - Panel at Window Sill



Plan - Panel at Window Jamb

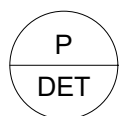
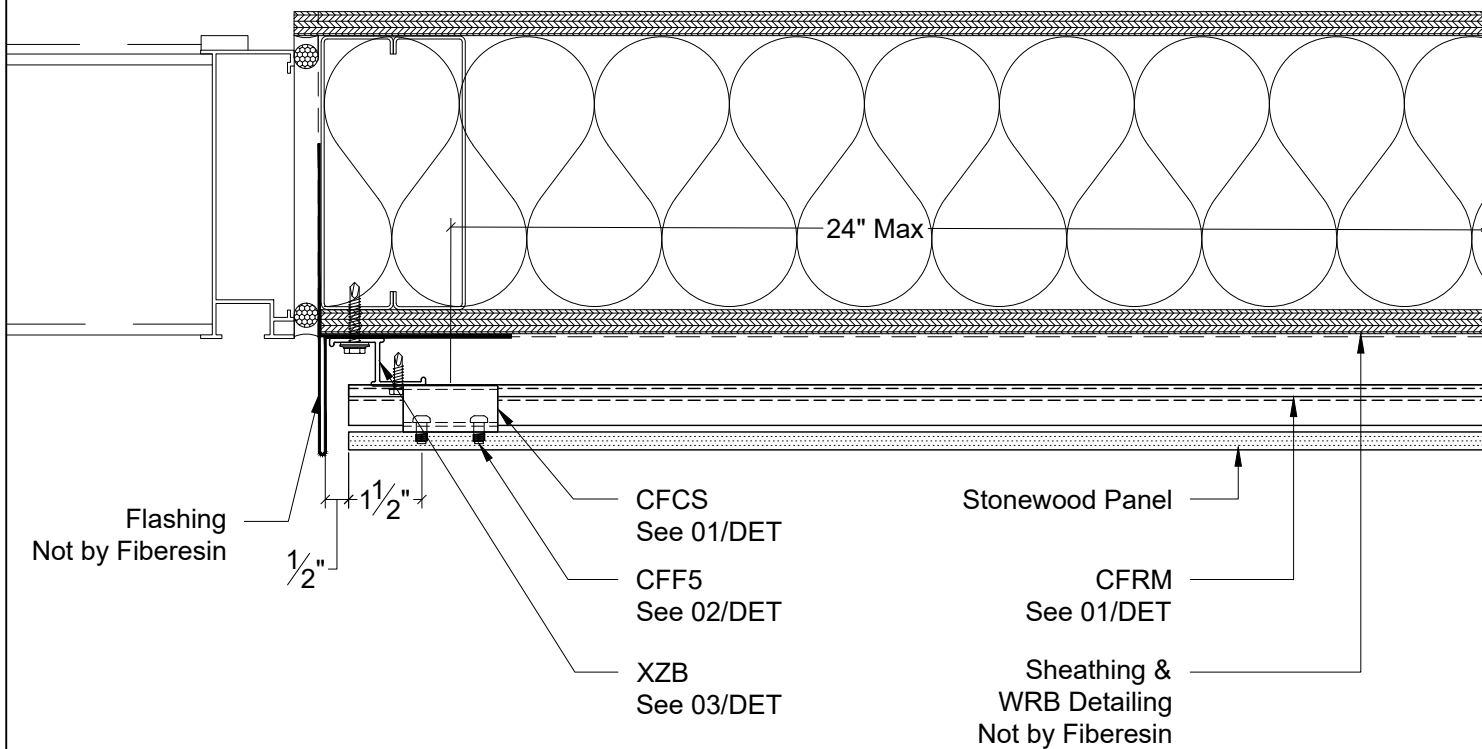


M  
DET Section - Panel at Louver Header

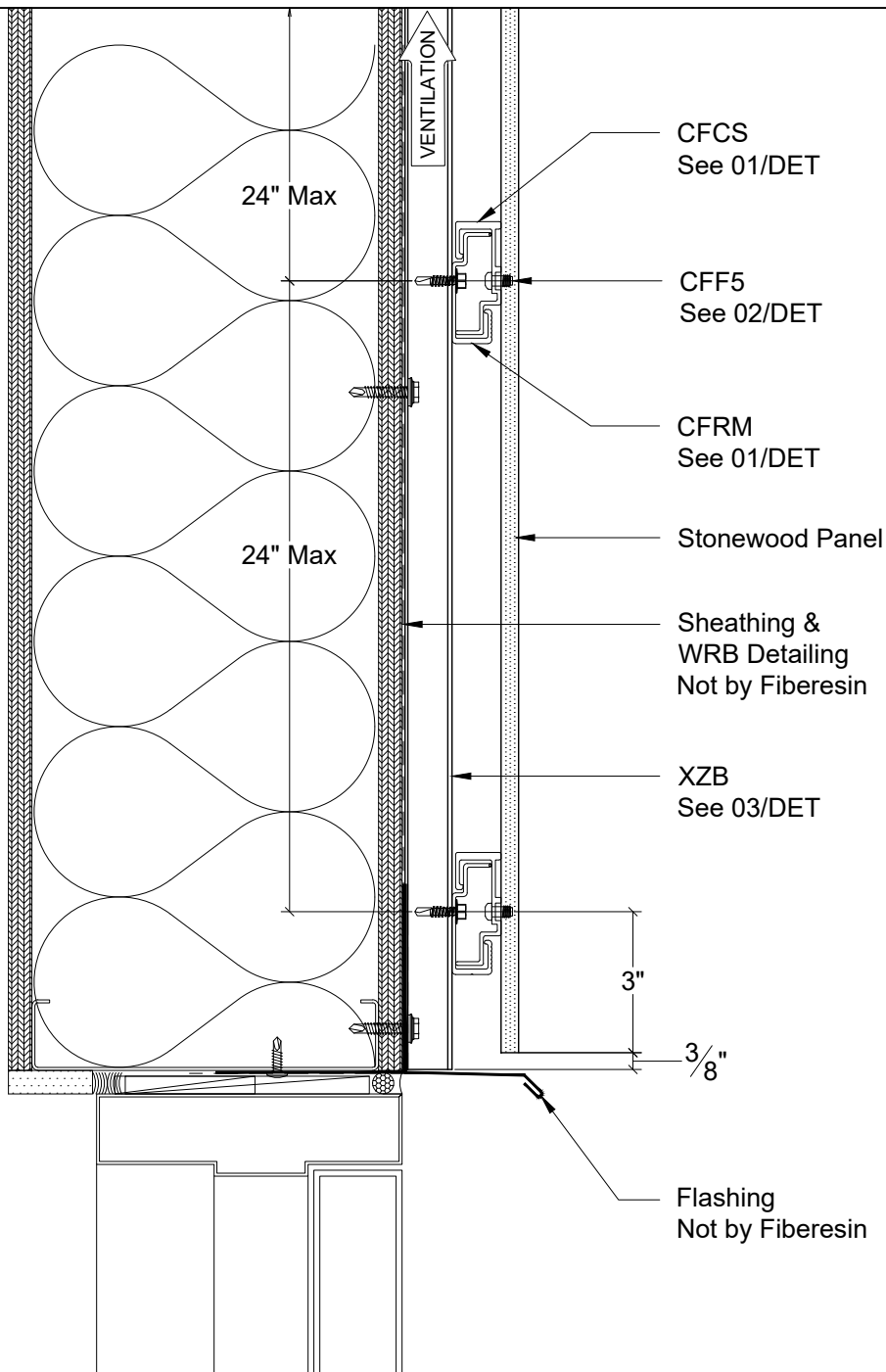


Section - Panel at Louver Sill

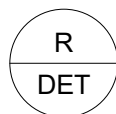
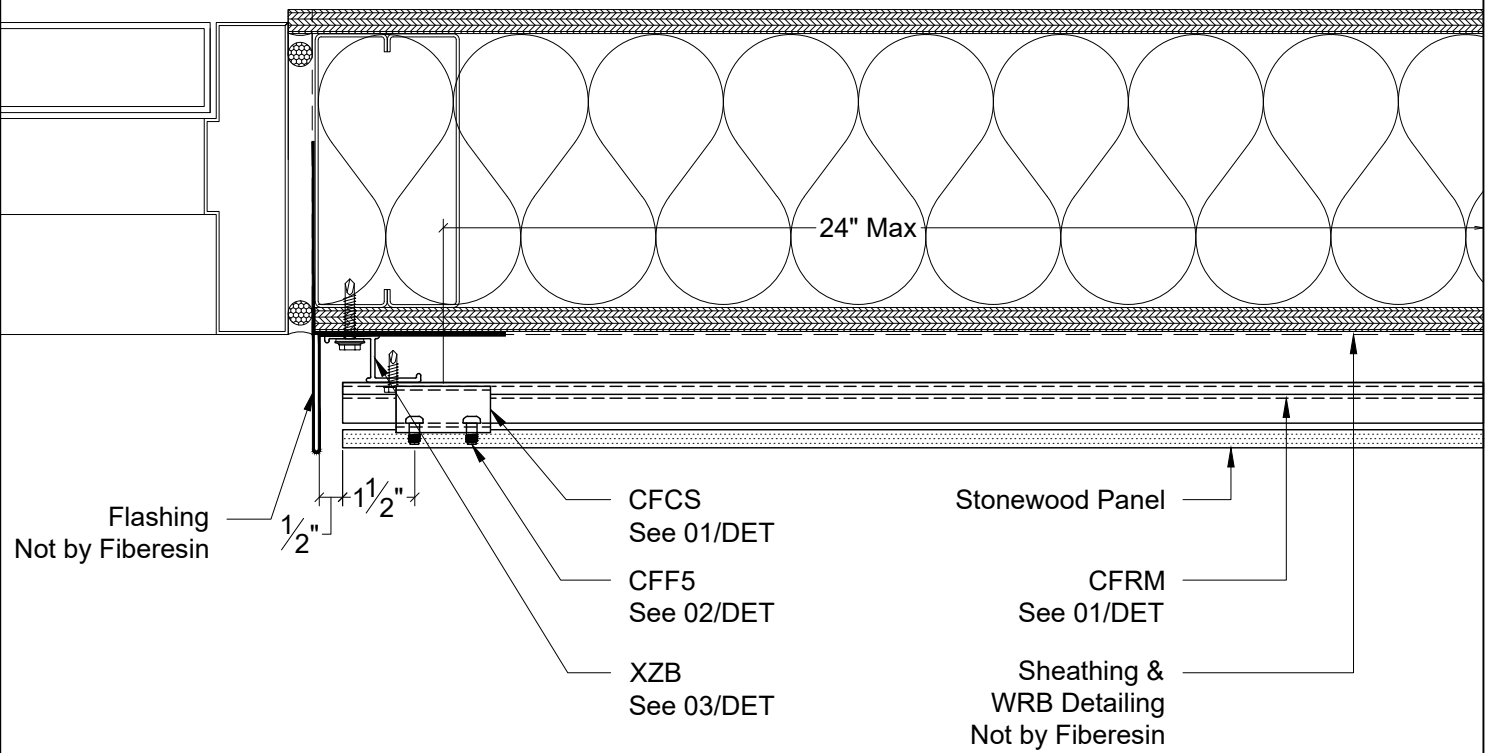
DET



Plan - Panel at Louver Jamb

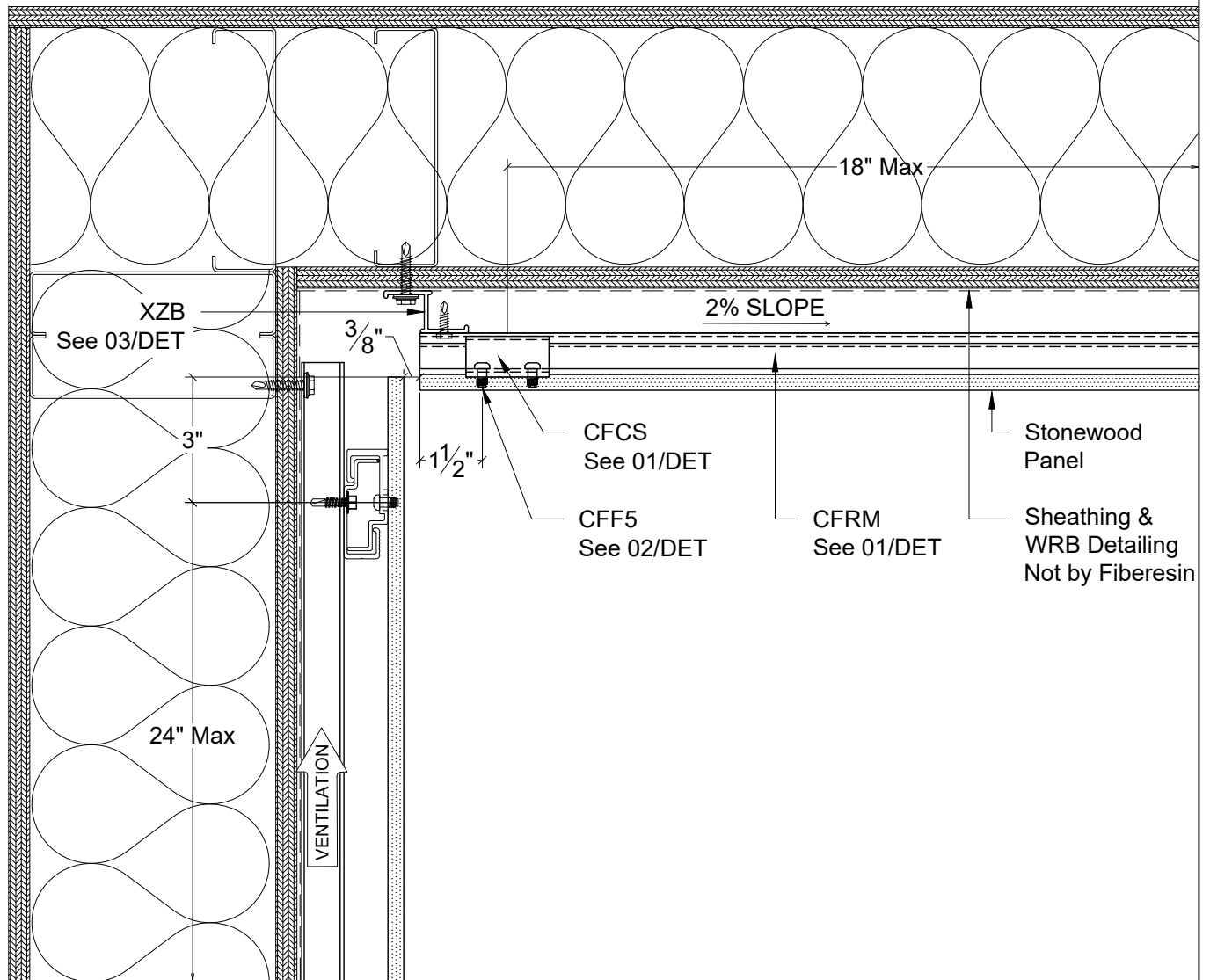


Q  
DET Section - Panel at Door Header



Plan - Panel at Door Jamb

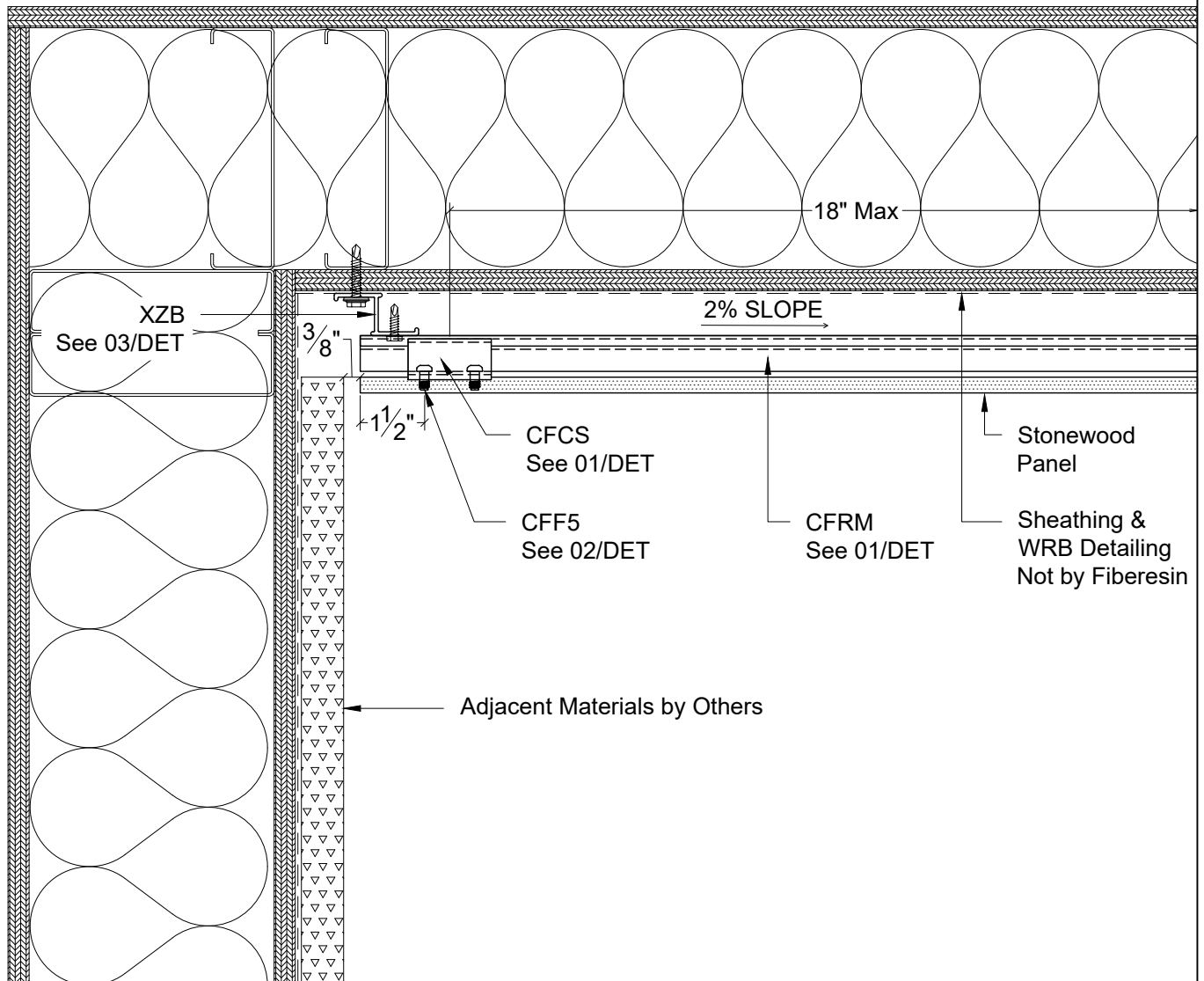
Clip Spanning on Soffits  
are Reduced to a  
Maximum of 18" O.C.



S1 Section - Panel at Wall to Soffit Transition: Primary  
DET



Clip Spanning on Soffits  
are Reduced to a  
Maximum of 18" O.C.



S2  
DET

Section - Panel at Wall to Soffit Transition: Alternative

