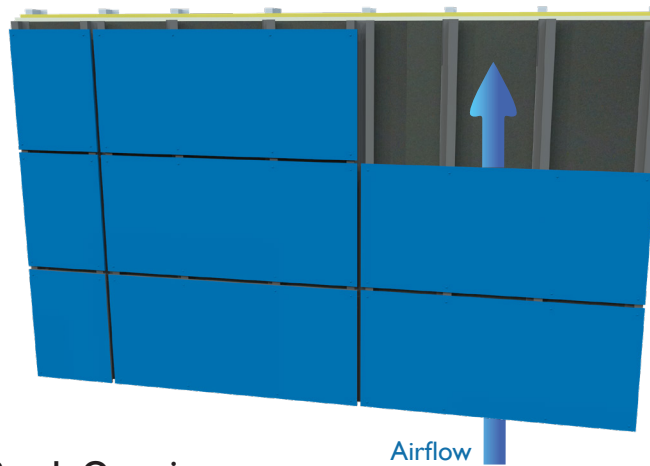


PRODUCT DESCRIPTION

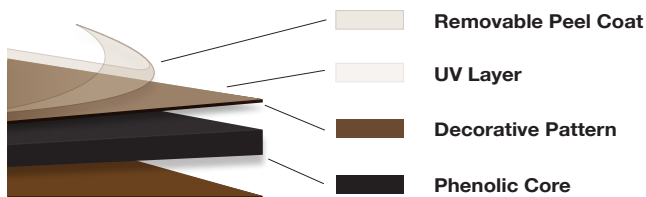


Stonewood Architectural Panels Overview

Solid phenolic core panels for use as open joint exterior cladding in a ventilated facade system. Stonewood Architectural Panels are required to have unobstructed air flow behind the panels system.

Material Composition

Stonewood is manufactured with a core of phenolic resin impregnated kraft paper and a decorative pattern. These layers are compressed at high pressure and temperature creating a highly durable, non-porous panel. The panel is further safeguarded by a UV-protective layer and a clear peel coat for shipping and handling.



The exposed panel edges and the horizontal reveals — between the panels—are the natural core of the phenolic panel. As the natural core ages it will develop a patina, turning from dark grey to light grey.

Phenolic Benefits

- **Solid core phenolic panels** are strong, highly durable, and impervious to moisture and bacteria
- **Attaches with multiple Stonewood systems:** Exposed, Concealed, Stonewood Stack, Stonewood Clip, Stonewood Vertical Siding, or systems by others
- **Non-porous surface** is easy to clean and graffiti resistant
- **UV protective layer** filters 99% of damaging UV rays

Phenolic Benefits Continued

- **Suited** for all construction types and climates
- **Class A or B** fire ratings
- **Optional Forest Stewardship Council®** certification
- **Made in America**

Fabrication

Panels can be both field and factory fabricated.

Panel Sizes x 96"

Thickness	Panel Size Before Fabrication	Weight	Weight/Sq.Ft.
5/16"	48" x 96"	72 lbs	2.25 lb/sq.ft.
3/8"	48" x 96"	86 lbs	2.69 lb/sq.ft.
1/2"	48" x 96"	115 lbs	3.59 lb/sq.ft.

Construction Types

Stonewood panels can be used in all construction types:

- Commercial
- Hospitality
- Mixed-use
- Municipal
- Multi-family
- Healthcare
- Institutional

DESIGN OFFERING

Over 300 colors are available in wood grains, abstract and solids. View complete Design Offering and order samples at Stonewoodpanels.com

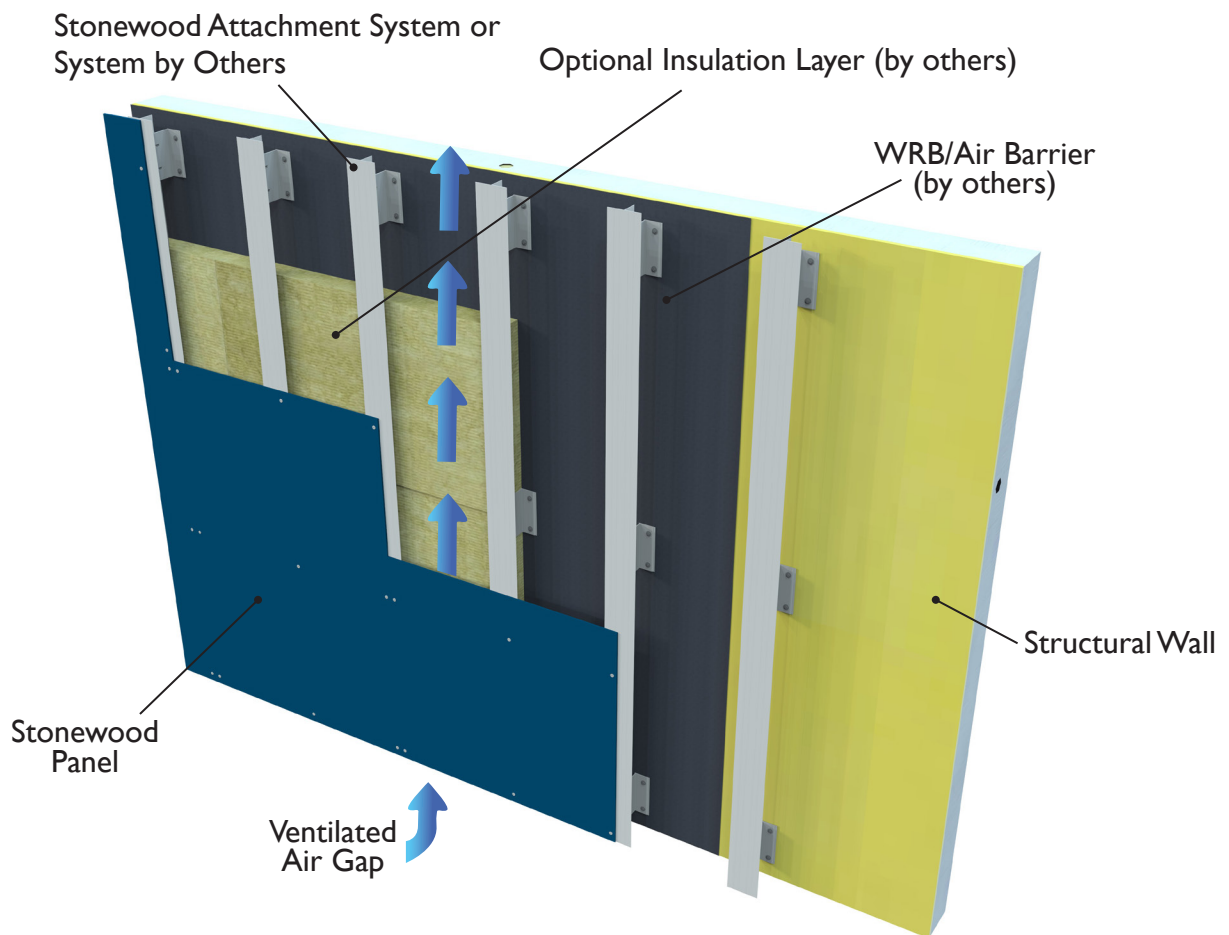
TECHNICAL AND ENVIRONMENTAL

Approvals:

- ASTM E-84 Class A or B rating
- Passed NFPA 285 with compliant assemblies using Class A-285 panels, visit Stonewoodpanels.com for compliant assemblies
- Miami-Dade County NOA (Notice of Acceptance), Certification number 21-0722.02, Class A 10mm panels and Stonewood Exposed Fastener (EF) Panel System
- Florida Product Approval FL27934, Class A 10mm panels and Stonewood Exposed Fastener (EF) Panel System

- UL Classified Approved, Report No. EWS0058, ref. NFPA 285 assembly for UL panel configuration using Concealed Fastener (CF) Panel System
 - NEMA Test Results
 - ASTM D-790: Flexural Strength, Flexural Modulus
 - ASTM D-638 Tensile Modulus
- Visit Stonewoodpanels.com for in-depth testing and report documents.

STONEWOOD PANEL OVERVIEW

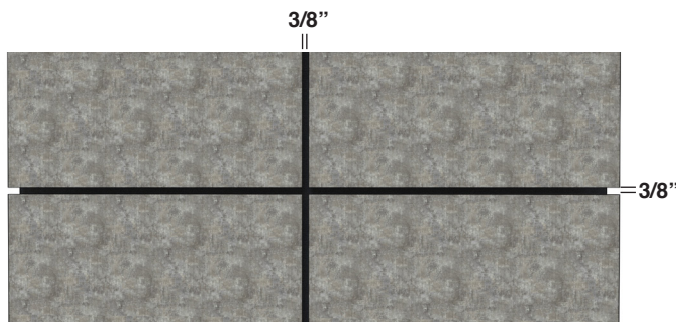


GENERAL INSTALLATION GUIDELINES FOR SYSTEMS BY OTHERS

- When using fastening systems by others, install panels over a subframe system that can support a cladding weight of up to **8 PSF made of either 0.09' ASTM B317 6063 T5 extruded aluminum or 16 gauge G90 galvanized steel.**
- Panels must be installed in a ventilated facade and adhere to expansion joint guidelines.
- A minimum distance of 3/8" must be maintained between panels to accommodate hygrothermal movement of the panels.
- Panels are NOT identical on both sides. The Front Side faces outward (away from the building) and has the removable Peel Coat. Installers are responsible for ensuring the appropriate Front Side is visible. **IMPORTANT:** Installers are responsible for removing Peel Coat AFTER installation.
- The actual number of fastening points and distance between supports must be verified by a building professional based on wind load as per local building code.

Visit Stonewoodpanels.com for comprehensive installation instructions and details.

Panel-to-Panel Joints



Maintain a minimum distance of 3/8" between panels to accommodate hygrothermal movement of the panels.

Storage and Handling

Panels have a peel coat to protect the surface during transportation and fabrication. The peel coat is not intended for long term storage. It is the responsibility of the installing contractor to remove peel on all panels prior to vacating the premises. Follow storage and handling instructions as outlined on Stonewoodpanels.com.

Cleaning

When cleaning Stonewood Architectural Panels, use a progressive approach starting with the gentlest cleaning method. It is best to use the least amount of cleaning agents and do not scrub to remove debris. Follow cleaning methods as outlined on Stonewoodpanels.com.

Repair

There is no approved method to repair panels. Damaged panels must be replaced. Contact Stonewood Customer Service for additional information, 262-567-4427.

Limitations

Stonewood Architectural Panels are designed to be installed on a continuous substructure. Panels are not to be installed such that they span areas where there is a discontinuity in the substructure, such as vertical or horizontal expansion joints. **It is the responsibility of the project designer to ensure that panels do not span these substructure discontinuities.**

MANUFACTURING LOCATION

Wisconsin, USA

AVAILABILITY

Available in the United States and Canada.

WARRANTY

Standard 10 year warranty is available.