



STONEWOOD™
ARCHITECTURAL PANELS

Exterior Panels



Made in America



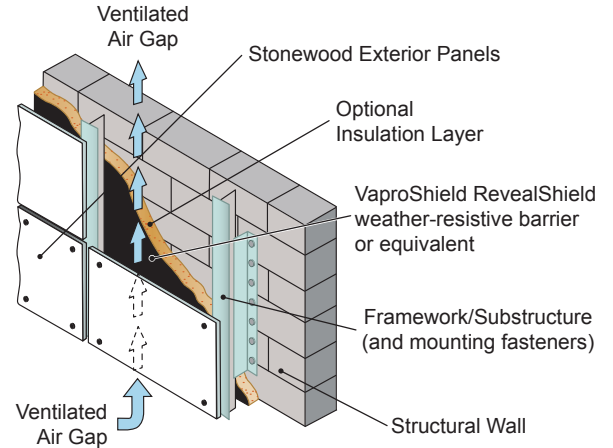
Rapid Lead Times

Overview

Stonewood Architectural Panels are solid phenolic panels Manufactured in America by Fibersin Industries, a trusted thermal fusion expert with over 50 years of experience.

To produce Stonewood Panels, raw kraft sheets are impregnated with phenolic resins, then thermally fused into a solid panel. The kraft sheets can be FSC® certified and contain 16% or more post-industrial recycled wood fiber content.

Stonewood Exterior Architectural Panels are designed to work as cladding with a rainscreen design in a ventilated façade system.



Stonewood Architectural Exterior Panels used as cladding with a rainscreen design.

Stonewood Benefits



Proven, Tested Performance

- Meets ASTM E-84 Class A and B fire rating.
- UV-blocking surface layer will withstand all weather conditions.
- Passed NFPA 285 Standard Fire Test for wall assemblies.
- Ten (10) year product warranty.



Sustainability

- Available with Forest Stewardship Council™ certification.
- Negligible VOC's.
- Renewable energy is produced in the plant to heat presses.



Economical and Fast Delivery

- Standard three-week production lead time.
- All panels are made in Wisconsin, USA from domestic materials.
- Economical, fabricated self-edges or traditional edge treatments.
- Easily cut on the job site, preventing cut and measure errors.



Your Choice: Color, Shape, Size, Thickness

- Standard thicknesses: 5/16", 8 mm, 3/8", 10 mm, 1/2", 13 mm.
- Custom thicknesses available.
- Extensive design offering with tried-and-true pallets of color choices.
- Color match options available.
- In-house CNC routers can shape panels to specific sizes and shapes.



Installation/Attachment

- Fibersin recommends the proven, reliable NorthClad® EF Exposed Fastener Panel System.
- Install with compatible third-party mounting systems.



Stonewood Architectural Exterior Panels are easily attached with an exposed fastener panel system. The panels and fasteners are available in countless designs and colors.



Durable Stonewood Architectural Panels installed to replace damaged competitor panels on the exterior of the Covenant House in Anchorage, Alaska.



STONEWOOD™
ARCHITECTURAL PANELS

Exterior Panels



Made in America



Rapid Lead Times



The new, two-story wood framed Kincaid Park Biathlon Building installed over 85 maple, 4' x 8' Stonewood Exterior Panels with self-tapping wood screws to match the panels. The building will serve as home base for biathlon competitions at Kincaid Park.

Solid Core Phenolic Physical and Performance Test Values¹

Panel Core		Black
Panel Thickness		3/8" (10mm)
PHYSICAL PROPERTIES	TEST METHOD	RESULT
Modulus of Elasticity		1,500,000 psi
Tensile Strength	ASTM D638	
	MD (psi)	18,000
	CD (psi)	13,000
Flexural Strength	ASTM D 790-07	
	MD (psi)	20,000
	CD (psi)	16,000
Flexural Modulus	ASTM D 790-07	
	MD (psi)	2.0 x 10 ⁶
	CD (psi)	1.5 x 10 ⁶
Dimensional Stability Length (Machine Direction), Width (Cross Direction)	EN438-2 17	0.25% (L), 0.50% (W)
Density		82
FIRE TESTING		CLASS A
Smoke Development	ASTM E84	15
Flame Spread Index	ASTM E84	15
Fire Propagation	NFPA 285	PASS
WEATHERING		
Color Stability	EN438-2:29 (ASTM G152)	gray scale >3
SYSTEM/ LOCATION TESTS		
Equivalency Letter	ASTM E330, E331	PASS
Florida Building Completed Tests	Code TAS 202, 203	



The mark of
responsible forestry
FSC® C115183

FSC® Certified

In March 2013 Fiberesin achieved FSC certification. Fiberesin Stonewood Architectural Panels, both exterior and interior, are available with Forest Stewardship Council™ certification.

1. Additional testing data available at www.stonewoodpanels.com.