

Project Profile

Legacy Condos | Minneapolis, MN
New / Hospitality



Panel Overview

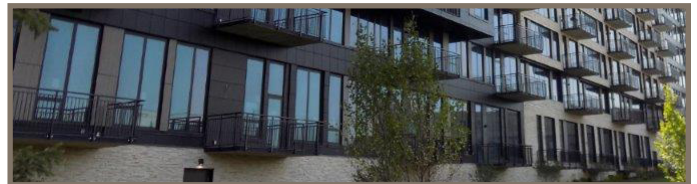
Application	Exterior
Size	120,000+ sq. ft.
Fasteners	Color Match Exposed Fasteners

Project Details

Over 120,000 sq. ft. of Stonewood Architectural Panels adorn the Legacy Condos in Minneapolis, MN.

Designed by Oertel Architects, the high-end residential building features inviting woodgrains that nod to industrial-era architecture. The extravagant project converges multiple styles, each represented by a sleek Stonewood panel design. Warm woodgrain panels accent the building entrance and playfully contrast the stark black panels surrounding the building's many windows. The architect specified the Stonewood Panels early in the process, citing their architectural adaptability and domestic production – both which helped the project stay under budget and ahead of the design curve.

The Legacy is slated for completion Fall 2018 and features 17 stories with 374 units.



Contractor/Installer:

RJM Construction
Golden Valley, MN

Representative:

Tegan Marketing
Paul Tegan
Minneapolis, MN
763-475-1340

Architect:

Oertel Architects
St Paul, MN