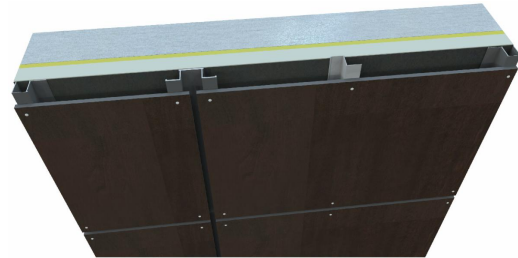


Five Product Lines to Fit Your Needs

Stonewood is pleased to announce it has five attachment systems to suit your next specification.

Stonewood Exposed Fastener System

EF SYSTEMS



- Economical and flexible fastening system
- Use for all panel sizes
- Color matching or accent fasteners add design disguise or accent
- Flexible fabrication either on the job site or in factory
- Easily adjusts around windows and other building variation

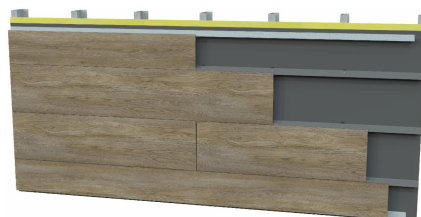
Stonewood Concealed Fastener System

CF SYSTEMS



- Showcase the clean look and beauty of the panel by hiding fixing points on the back
- No complicated undercuts or expensive fastenings to retain mounting brackets
- Ideal for larger panels installed on continuous walls
- Use for all panel sizes

Stonewood Stack



- Kerfed groove plank slides onto corresponding horizontal rail
- Concealed fasteners create clean look, showcasing planks

- Uniquely suited for use on large low-rise continuous surfaces offering quick and easy installation
- Plank joint placement can vary without additional support structure.
- Simplified specification

Stonewood Clip

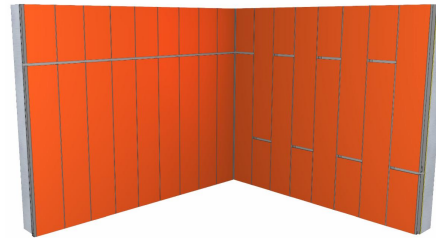
STONEWOOD™
CLIP



- Factory-machined plank laps conceal clips for a clean look.
- Clips create ventilated facade
- Cost effective solution for plank attachment
- Simplified specification, minimal parts

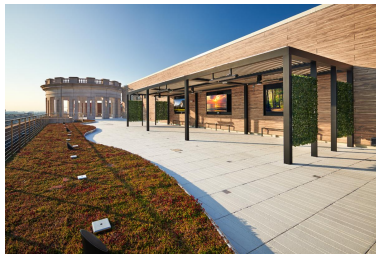
Stonewood Vertical Siding

STONEWOOD
VERTICAL
SIDING



- Kerfed groove plank slides onto corresponding vertical siding rail
- Concealed fasteners create a clean look, showcasing planks
- Reduced installation error, no field drilling or threaded fasteners are required to secure planks
- Ideal for accent areas to complement other areas of the installation

Projects



AARP, Washington D.C.



West 32nd Avenue Multi-Family Housing, Anchorage, AK

[VIEW MORE PROJECT PROFILES](#)

Resource Library

We updated our Resource Library adding filters so you can easily find documents that correspond to each system.

[All](#)[CF Concealed Fastener System](#)[Corporate](#)[Design Offering](#)[EF Exposed Fastener System](#)[Exterior Panels](#)[Installation Instructions](#)[Product Data Sheets](#)[Stonewood Clip System](#)[Stonewood Stack System](#)[Vertical Siding System](#)

Exposed Fastener
Product Data Sheet



EF Installation
Instructions



Panel Weights



Panel/Plank Specs,
Class A, Class B
(PDF)



Panel/Plank Specs,
Class A, Class B
(Word)

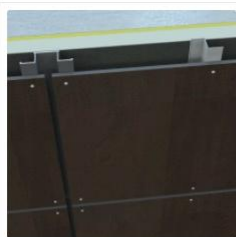


Miami-Dade County
NOA, Class A 10mm
Panels

[LEARN MORE](#)

Installation Instructions - All NEW!

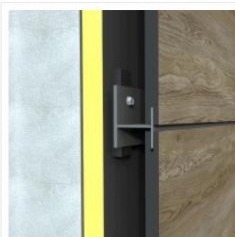
All our systems have enhanced step-by-step installation instructions, plus there is a **NEW VIDEO** outlining recommended tools, field cutting, chamfering, detailing, kerfing, rabbeting, and final inspection.



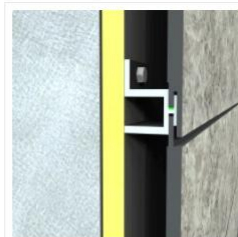
Exposed Fastener Installation



Concealed Fastener Installation



Stonewood Stack Installation



Stonewood Clip Installation



Vertical Siding Installation



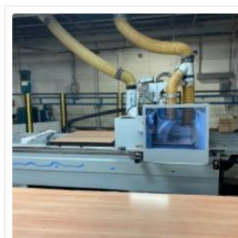
Storage and Handling



STONEWOOD
ARCHITECTURAL PANELS

Field Fabrication

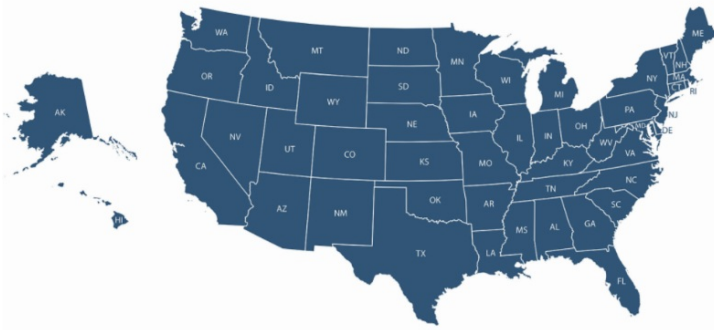
Field Fabrication Video



Factory Processing Guidelines

[LEARN MORE](#)

Find your local representative and learn more about Stonewood's products today!



Why Stonewood?



Made in America



Zero Flame Spread



Quick Lead Time

Stonewood Architectural Panels | 262-567-4427 | stonewoodpanels.com