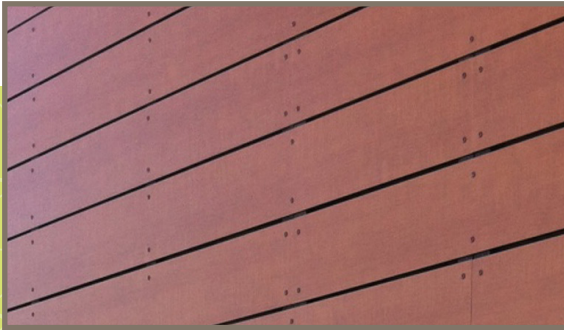




# Project Profile

Kincaid Park Biathlon | Anchorage, AK  
Municipal Building



*Over 85 Huntington Maple Stonewood Exterior Architectural Panels were installed with wood screws to match the panels on the new Kincaid Park Biathlon Building.*



*Stonewood Panels are proudly Manufactured in America with a short three-week production lead time.*

## Project Details

The Municipality is working with the Kincaid Project Group to provide healthy recreation opportunities at Kincaid Park. Kincaid Park is known throughout the world as a center for Nordic skiing and serves as one of the few locations in the U.S. for the development of biathlon.

The new Biathlon Building is a 820 sq. ft., two-story wood framed structure, with galvanized grating and a gun vault that will be used for biathlon competitions at the Kincaid Park.

## Panel Overview

Application	Exterior
Size	4'x8'
No. of Panels	85
Fasteners	SFS intec® TWS D12 self-tapping wood screws colored to match panels
Attachment Substrate	Battens
Color	Wood Grain
Installers	Criterion General <a href="http://www.criteriongeneral.com">www.criteriongeneral.com</a>

## Representative:

Exterior Technology Systems

Preston Rudderow | Phone: 907-227-0653